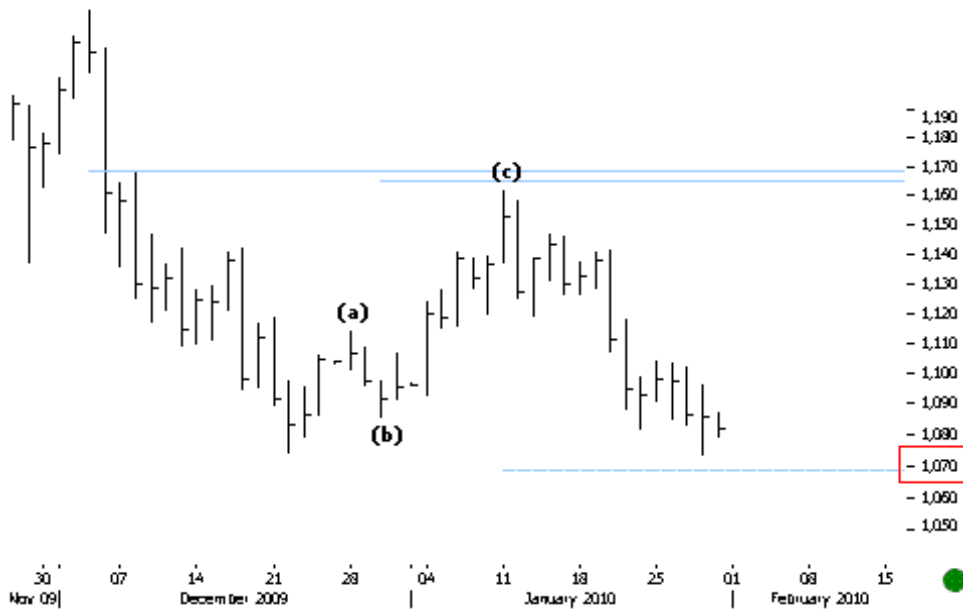


GLOBAL

EUR/USD - 1.4055
GOLD - 1094,85
DOW - 10,196.86
OIL - 73.12

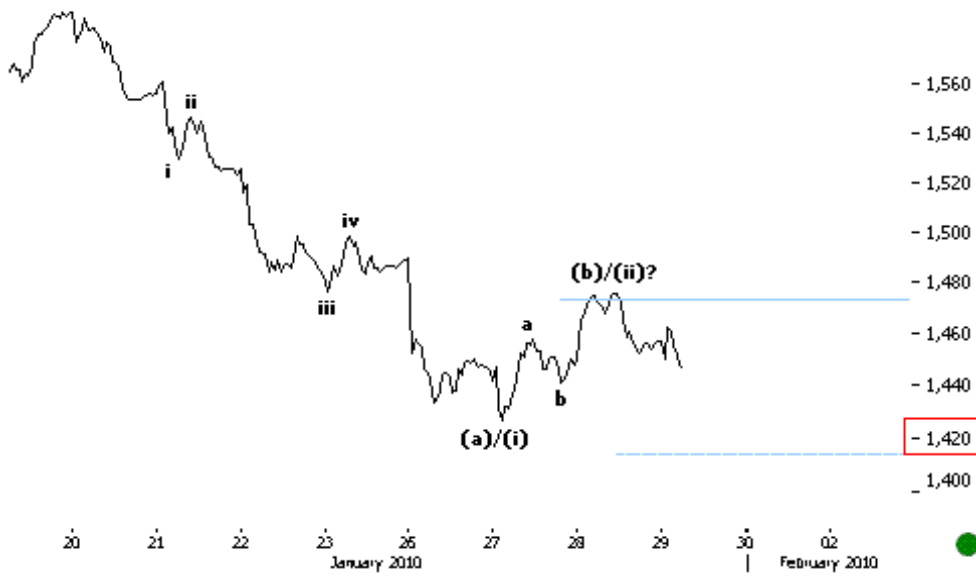


TICKS
GLOBAL
Orpheus CAPITALS

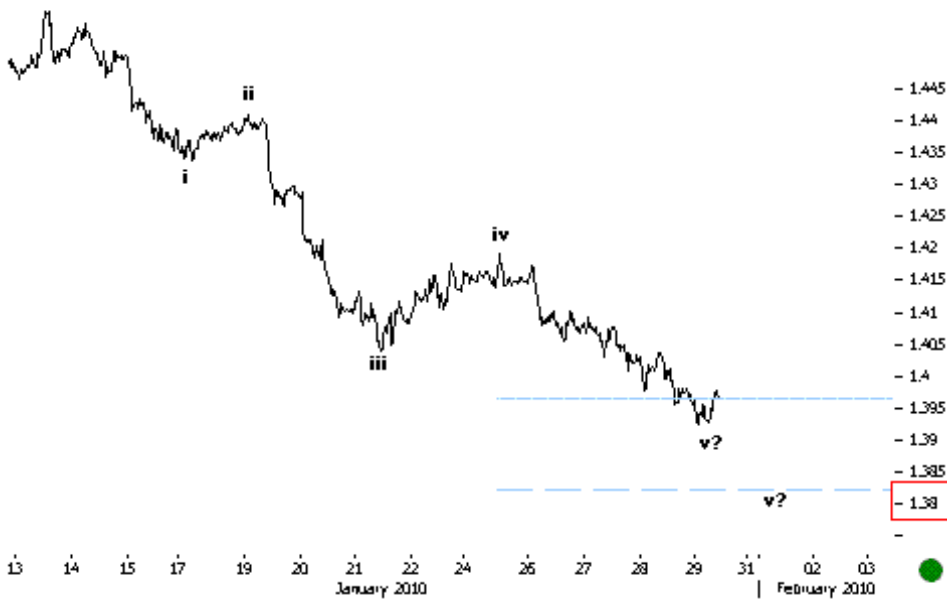


29.01.10 GOLD DAILY
Prices continue to push lower as anticipated. Sub key 1,070 levels we should get more negative confirmation.

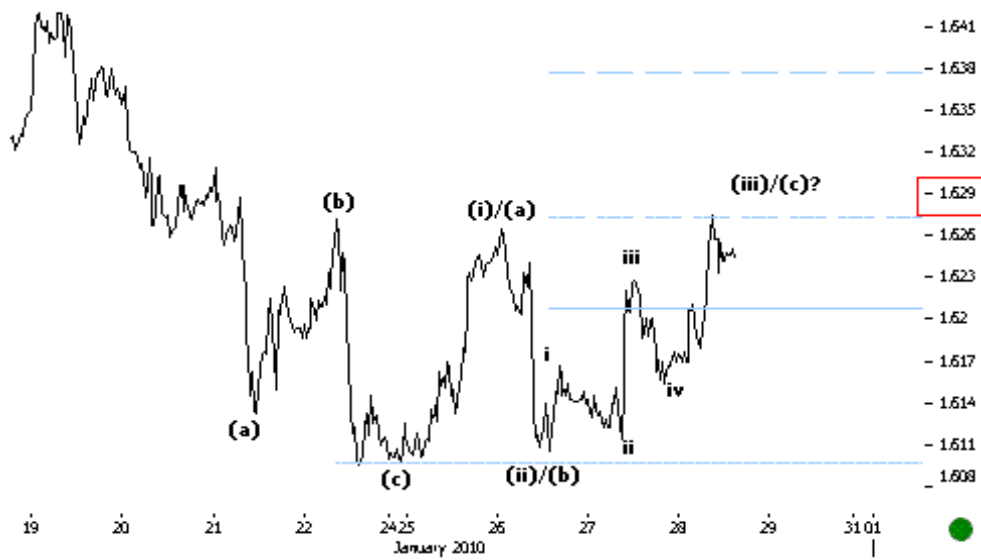
- 1,190
- 1,180
- 1,170
- 1,160
- 1,150
- 1,140
- 1,130
- 1,120
- 1,110
- 1,100
- 1,090
- 1,080
- 1,070
- 1,060
- 1,050



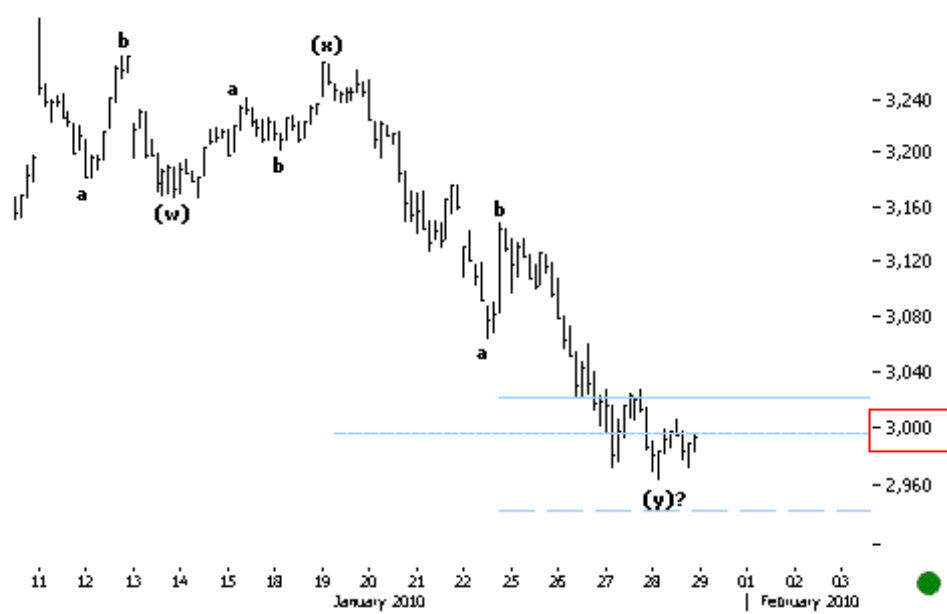
29.01.10 IRTS 30MIN
 Prices seem to be in a corrective structure down. Sub key levels at 1,420 we should get more negative confirmation.



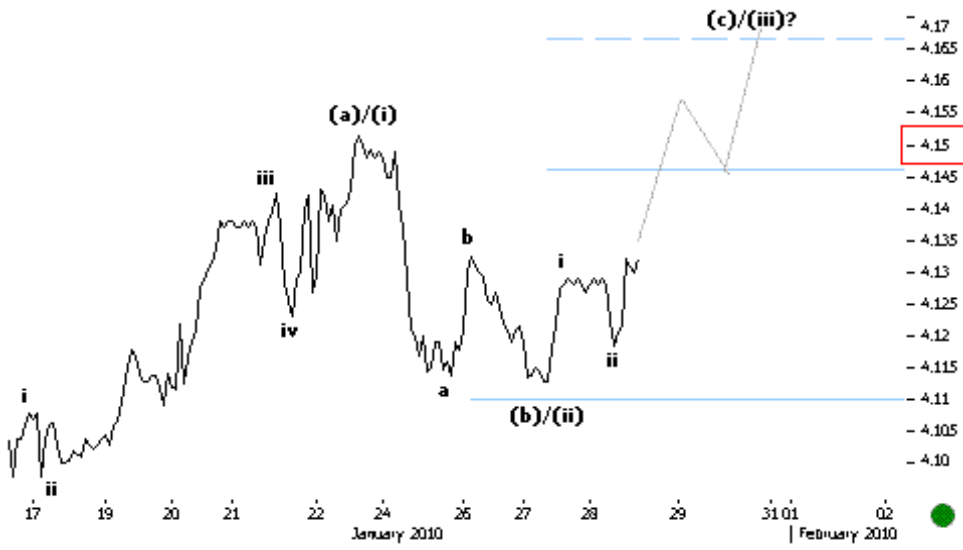
29.01.10 EURUSD 30MIN
 The subminor fifth leg down could extend lower till key supports at 1.38 levels.



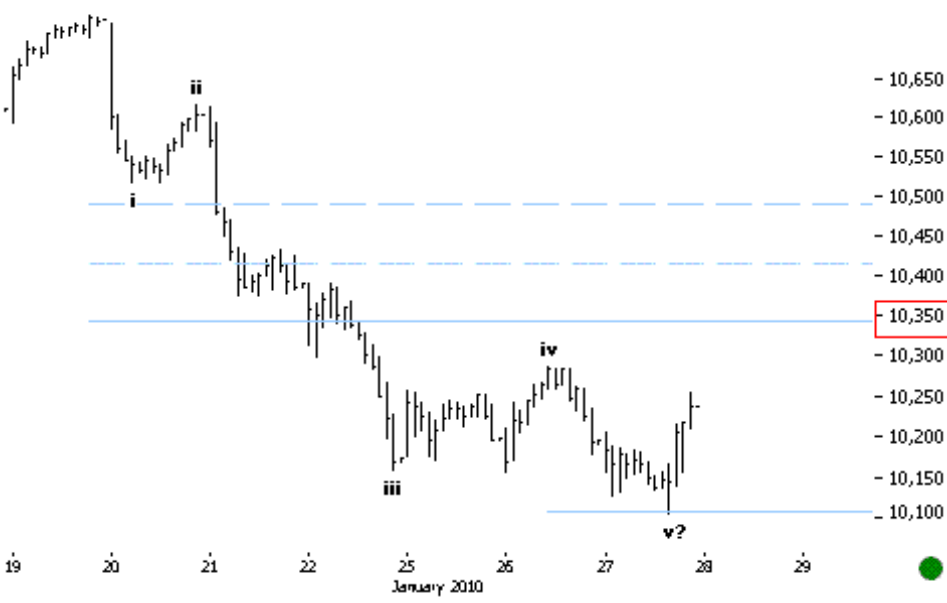
28.01.10 GBPUSD 30MIN
 We are not ruling out the possibility of a new impulse up. We need a clear break above key 1.63 levels for a positive confirmation.



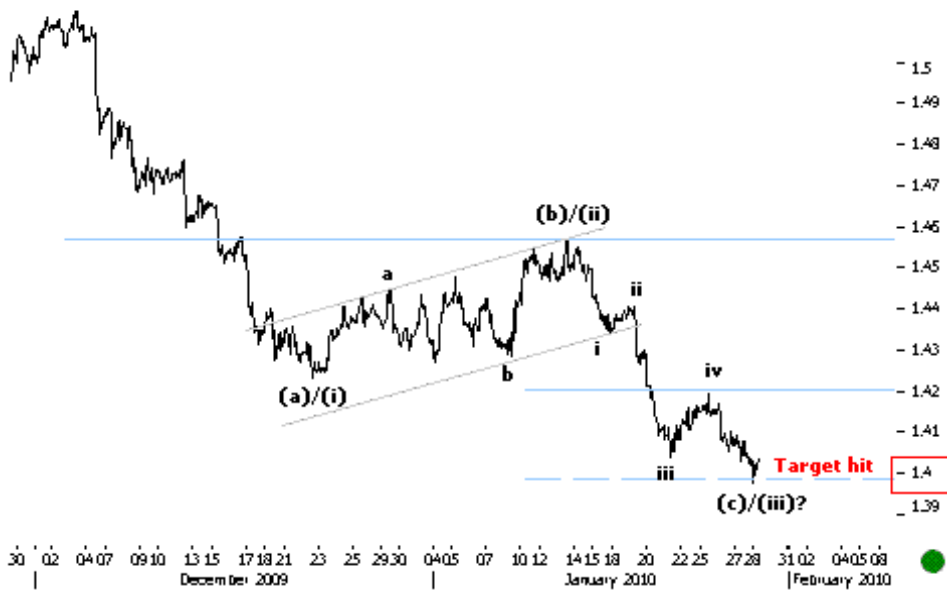
28.01.10 SSEC 30MIN
 Prices continued to push lower in the (y) wave down till psychological 3,000 levels. We expect at least a pause here.



28.01.10 EURRON 60MIN
 Prices seem to be in the third leg of a corrective structure up which could push higher till key resistances at 4.17 levels.



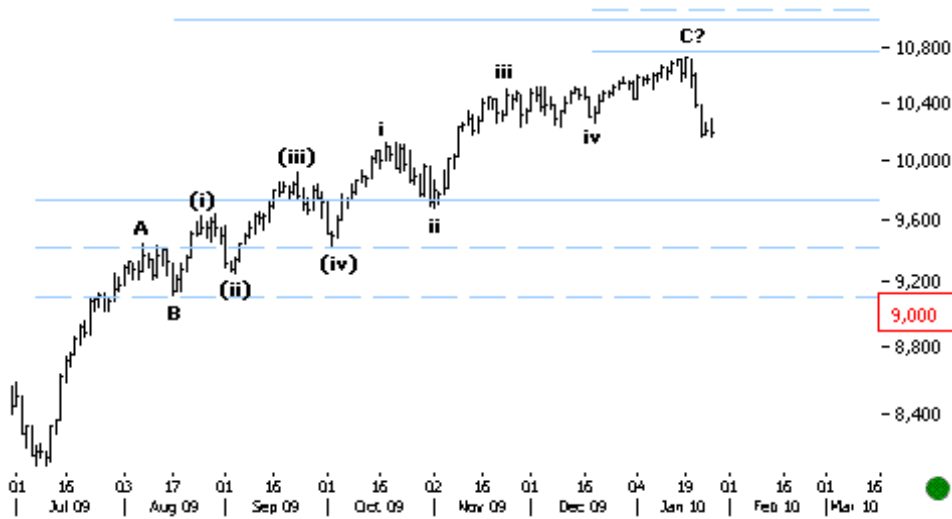
28.01.10 DOW 30MIN
 Our reviewed count sees this as a complete five wave structure down and now a potential correction till key 10,350-10,400 levels.



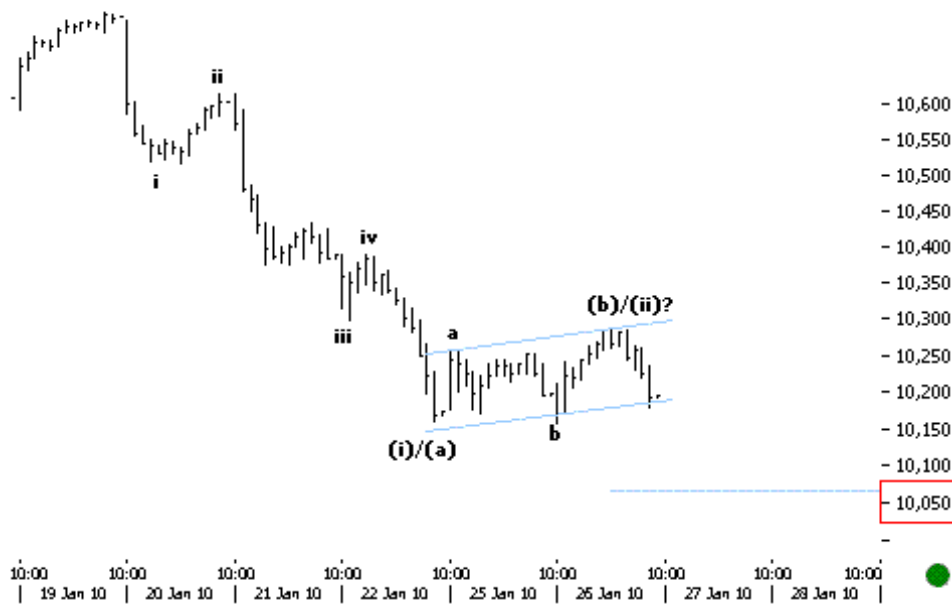
Happened 28.01.10
 EURUSD 60MIN Our anticipated target at key 1.4 levels was hit. We need a clear break here to continue to look lower.



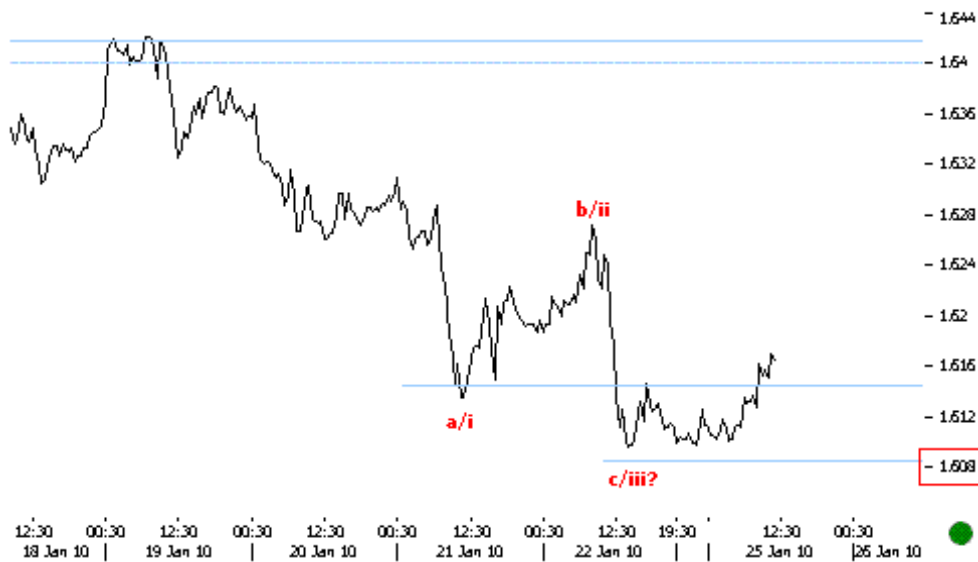
Anticipated Ticks.Global 200110
 EURUSD 60MIN Prices pushed lower till first supports at key 1.42 levels. Sub respective levels we continue to look lower till key 1.4.



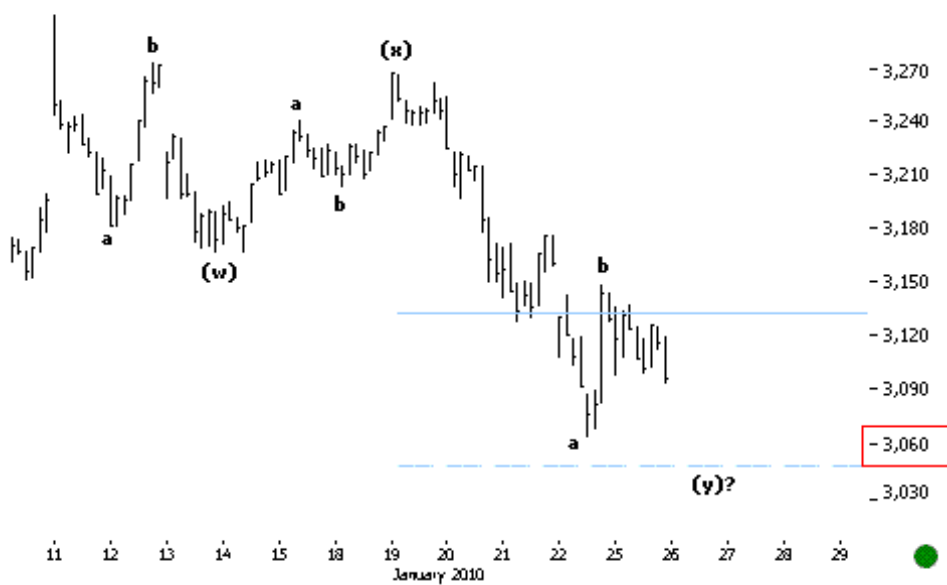
27.01.10 DOW DAILY
 Prices turned back from anticipated resistances near key 10,800 levels. If this is indeed an intermediate reversal, prices could retrace till our most aggressive target at psychological 9,000.



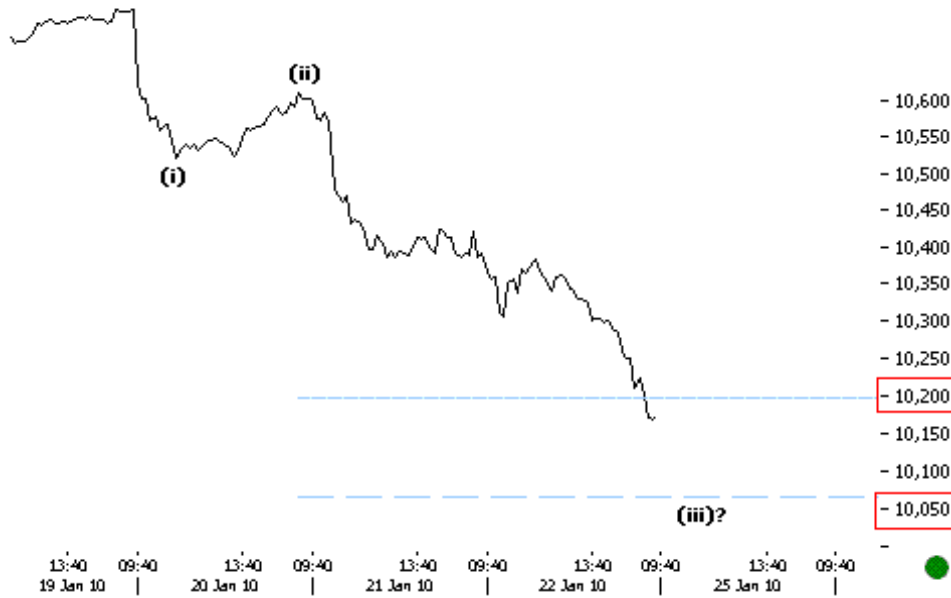
27.01.10 DOW 30MIN
 Prices are completing a second wave corrective structure. A clear break at trend channel supports at 10,187 levels would push prices lower till next key targets at 10,050 levels.



25.01.10 GBPUSD 30MIN
Prices bounce back from key supports at 1.608 levels. It is too early to call the corrective structure down complete.

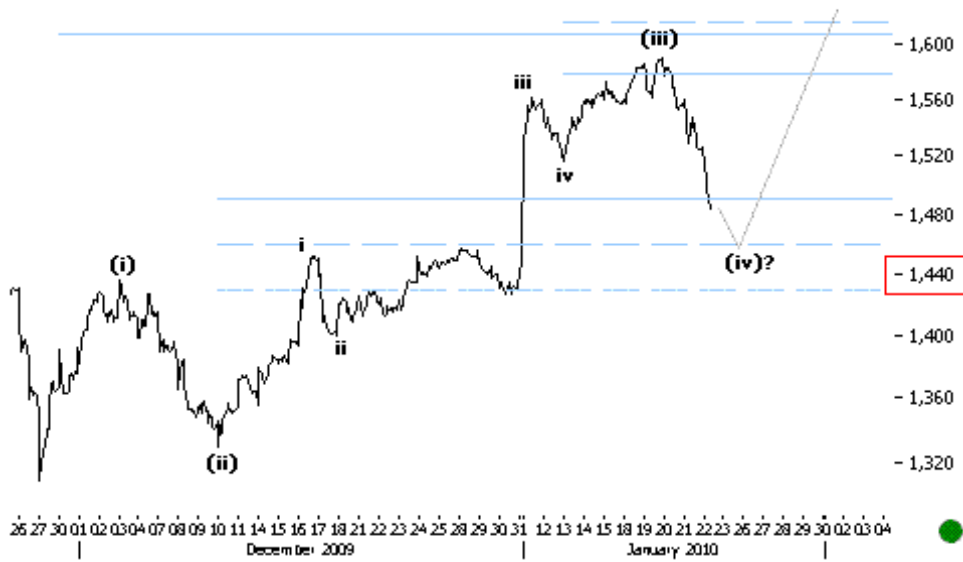


25.01.10 SSEC 30MIN
Prices seem to be in a 3-3-3 corrective structure down. Key supports lie at 3,050 levels.



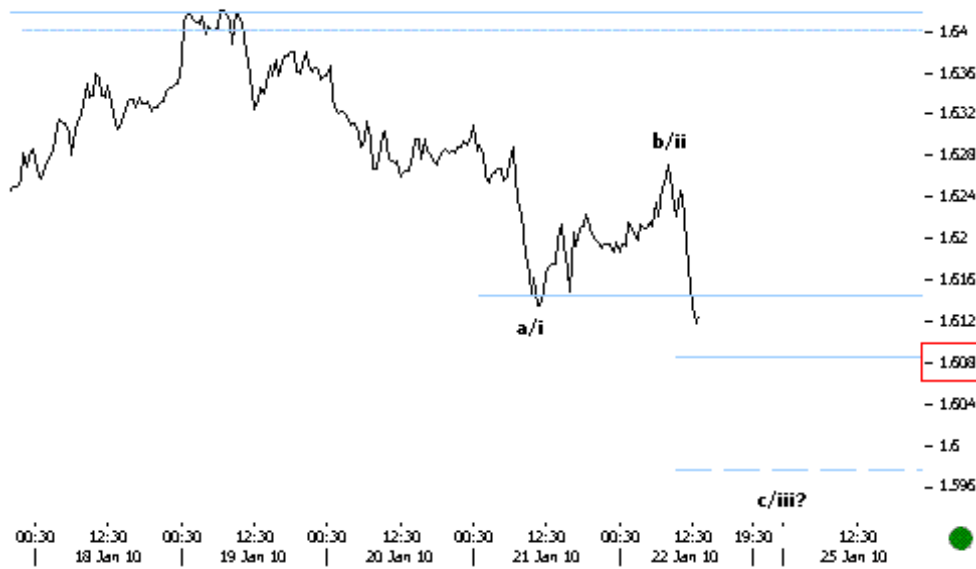
- 10,600
 - 10,550
 - 10,500
 - 10,450
 - 10,400
 - 10,350
 - 10,300
 - 10,250
 - 10,200
 - 10,150
 - 10,100
 - 10,050
 -

25.01.10 DOW 10MIN The downmove looks impulsive. Sub key 10,200 we continue to look lower till key supports at 10,050.

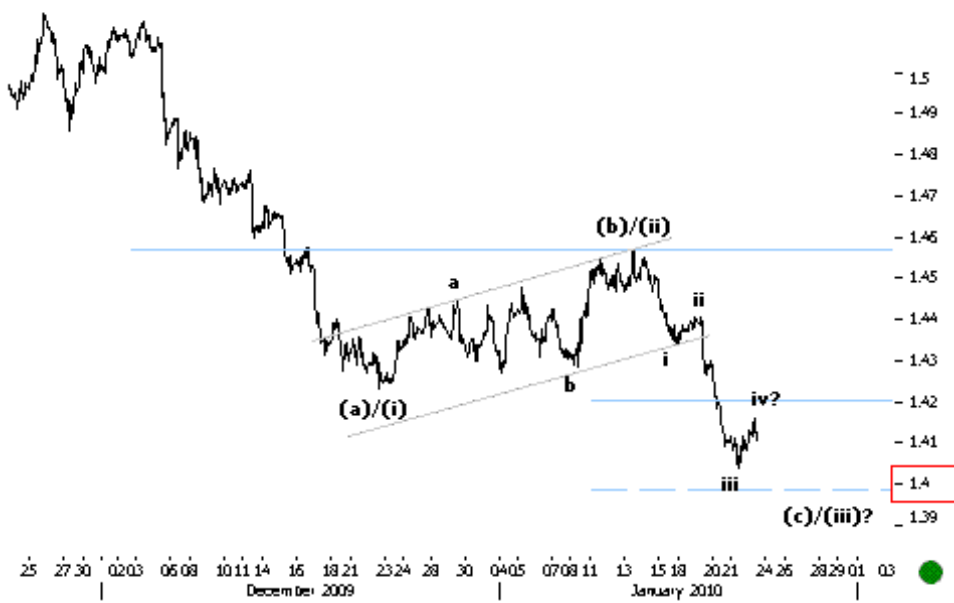


- 1,600
 - 1,560
 - 1,520
 - 1,480
 - 1,440
 - 1,400
 - 1,360
 - 1,320

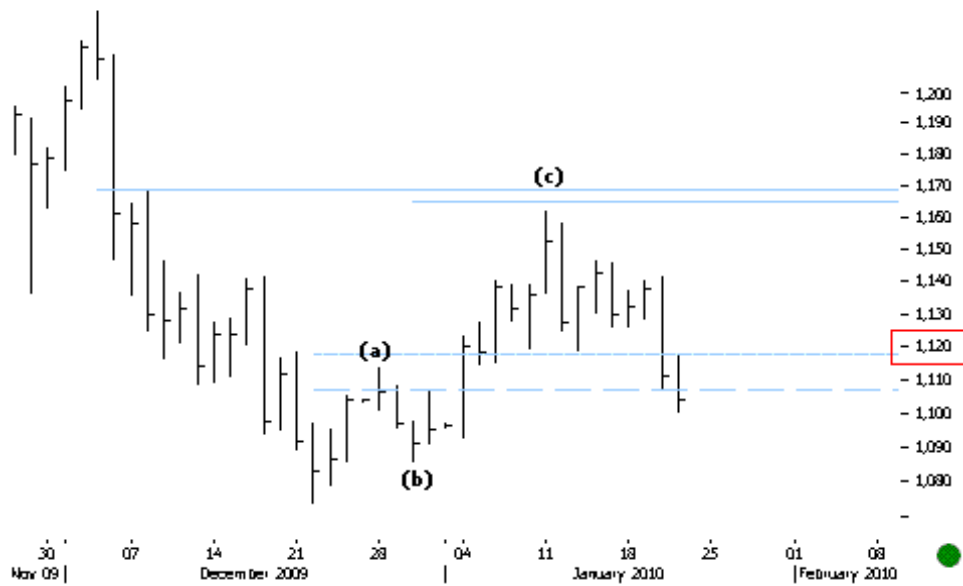
22.01.10 IRTS 60MIN The current retracement looks like a fourth wave correction which should not push lower than key FIB levels at 1,460-1,430, after which the last leg up should start.



22.01.10 GBPUSD 30MIN
 The downmove continues.
 Sub key levels at 1.608 we
 should get more negative
 confirmation.



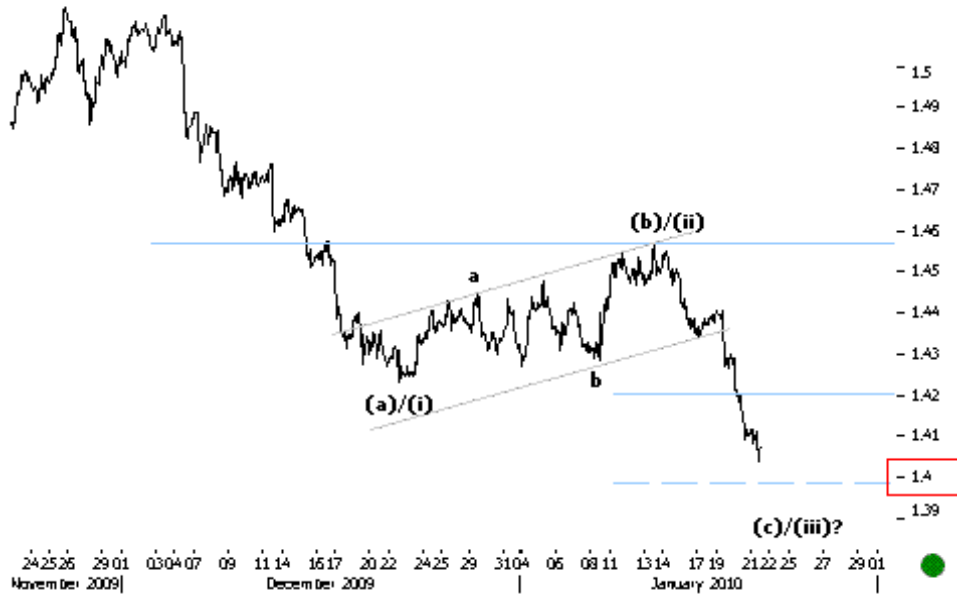
22.01.10 EURUSD 60MIN
 The third leg down seems
 incomplete. We still expect
 another downmove till key
 targets at 1.4.



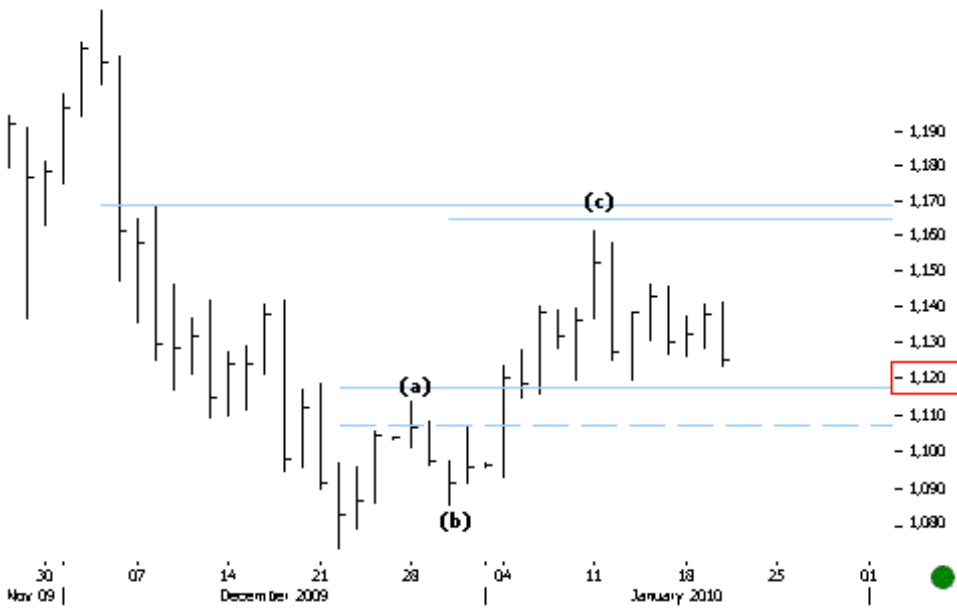
21.01.10 GOLD DAILY
 Prices break key 1,120 levels as anticipated.



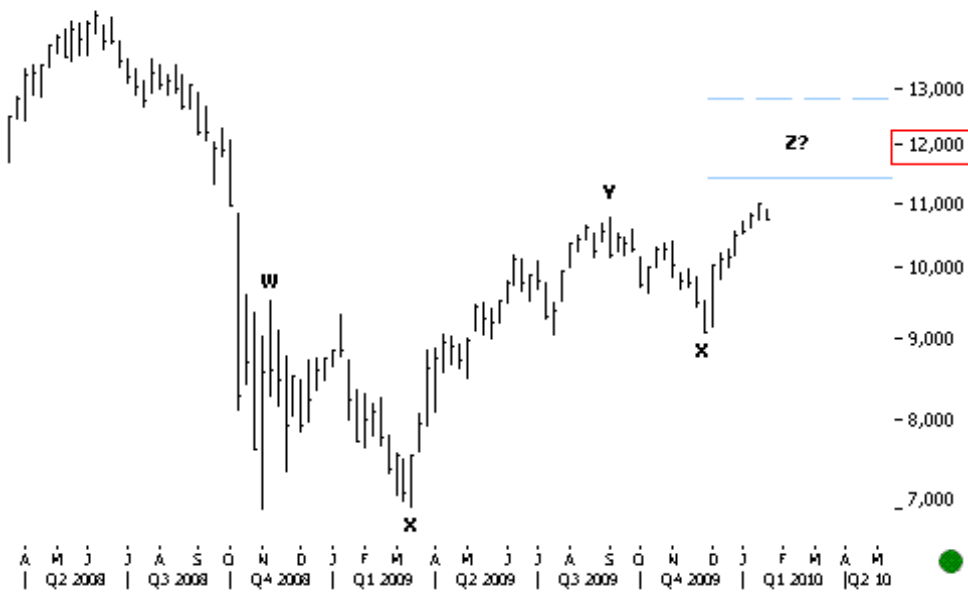
21.01.10 GBPUSD 60MIN
 Prices bounced back from anticipated resistances. We need a clear break sub key 1.615 levels to continue to look lower.



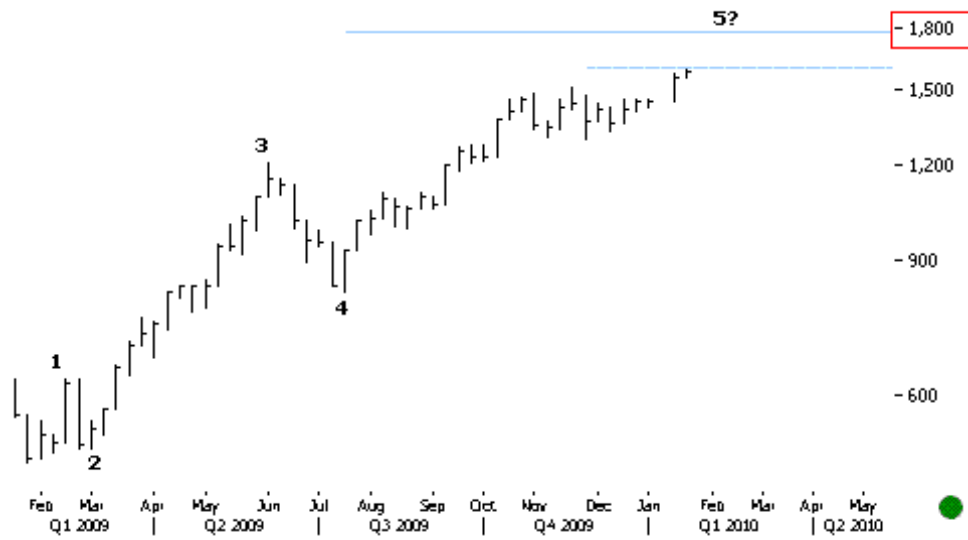
21.01.10 EURUSD 60MIN
 Prices are heading to anticipated targets at key 1.4 levels.



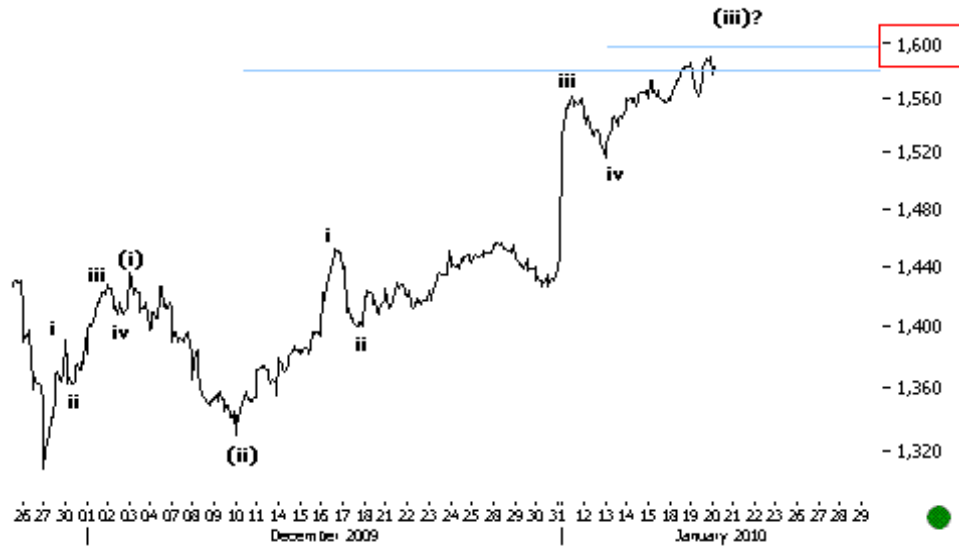
20.01.10 GOLD DAILY
 Prices continued to push lower after completing the corrective structure up. Sub key levels at 1,120 we should get more negative confirmation.



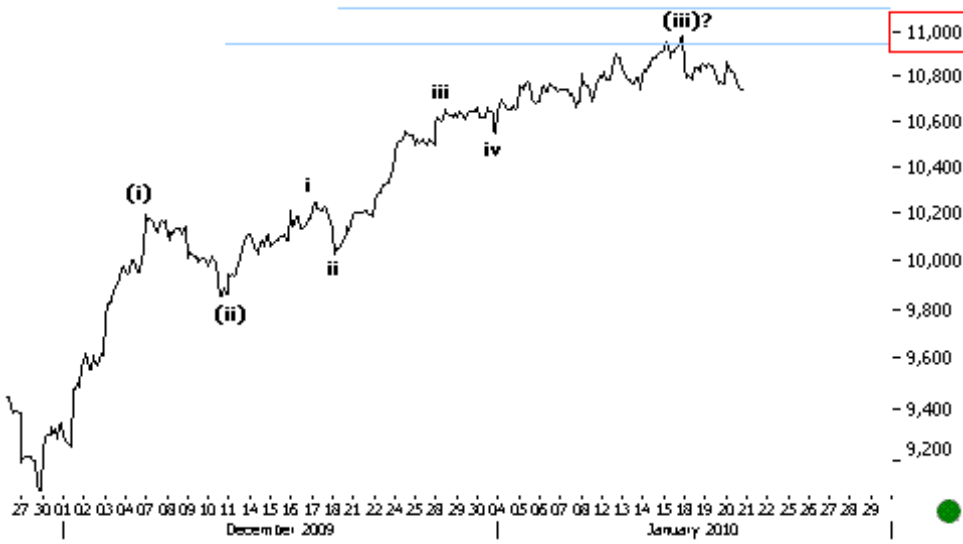
20.01.10 NIKKEI WEEKLY
 Prices are completing a W-X-Y-Z corrective structure up. Key resistances lie at 11,400 levels.



20.01.10 IRTS WEEKLY
 Prices are completing an intermediate impulse up. Key resistance levels lie at 1,600-1,800.



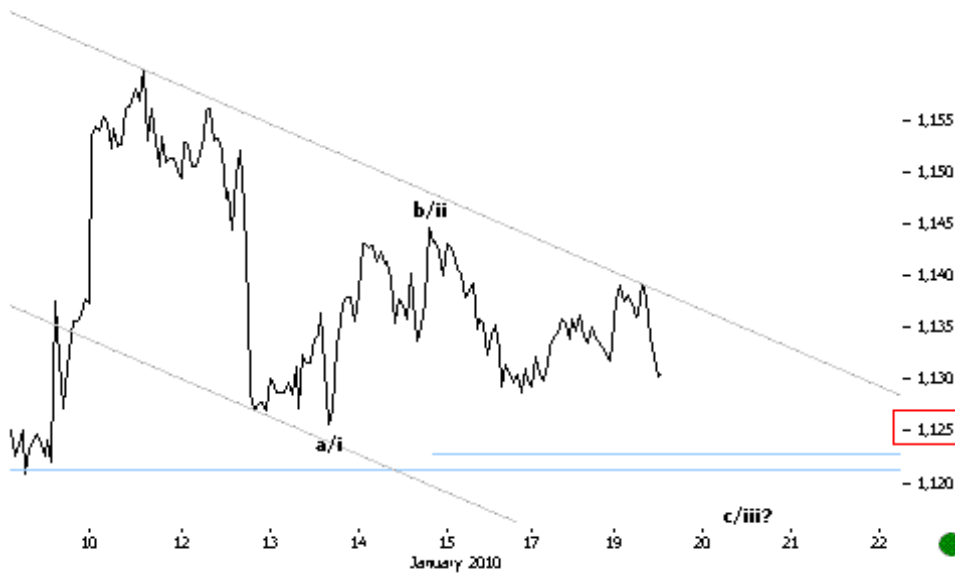
20.01.10 IRTS 60MIN
 Prices are heading to key resistances at 1,600 levels in the third leg of the subminor impulse up.



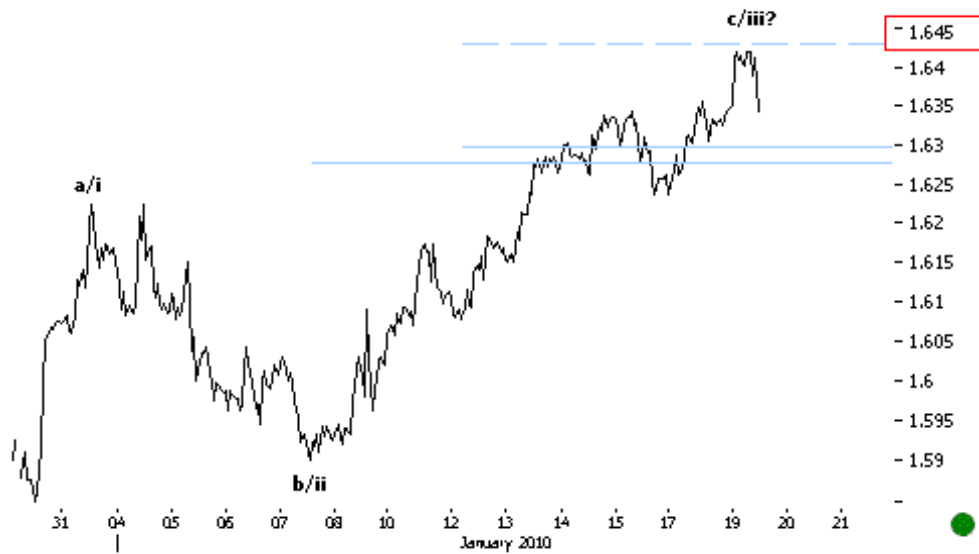
20.01.10 NIKKEI 30MIN
 Prices bounce back from anticipated resistances at psychological 11,000 levels.



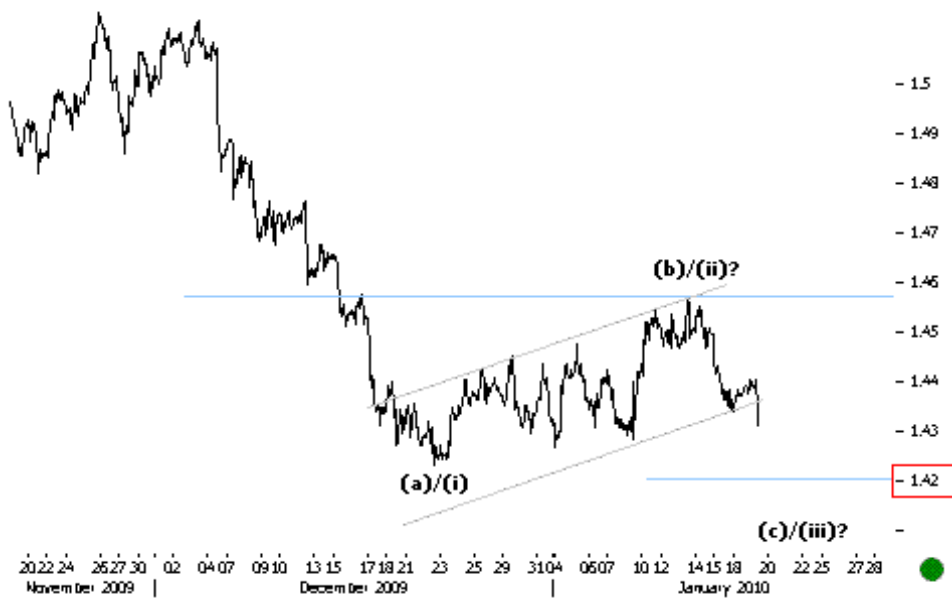
20.01.10 EURUSD 60MIN
 As anticipated, prices pushed lower till first supports at key 1.42 levels. Sub respective levels we continue to look lower till key 1.4.



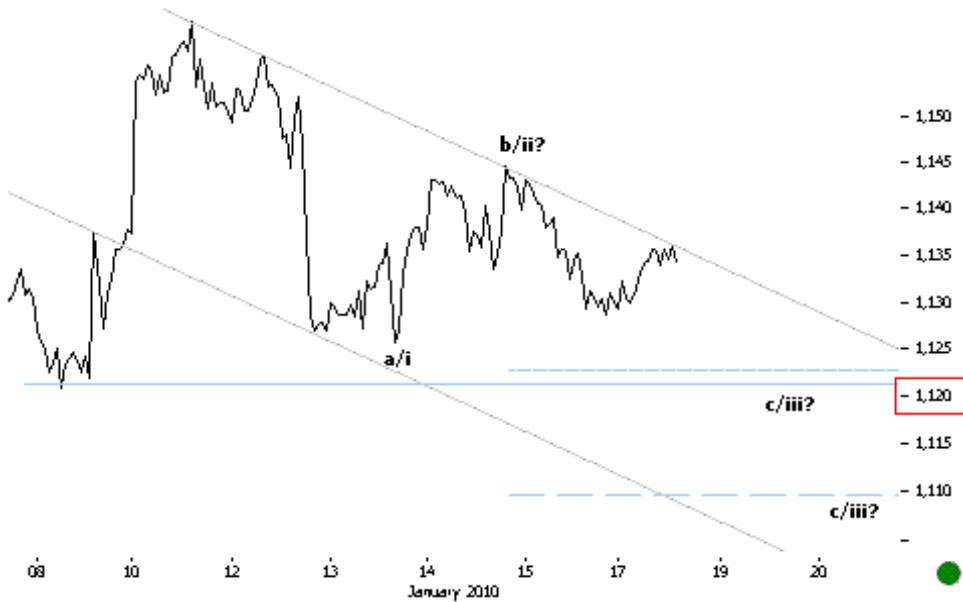
19.01.10 GOLD 60MIN
 Prices turned back from trend channel resistances. Sub key levels at 1,125 we should get more negative confirmation.



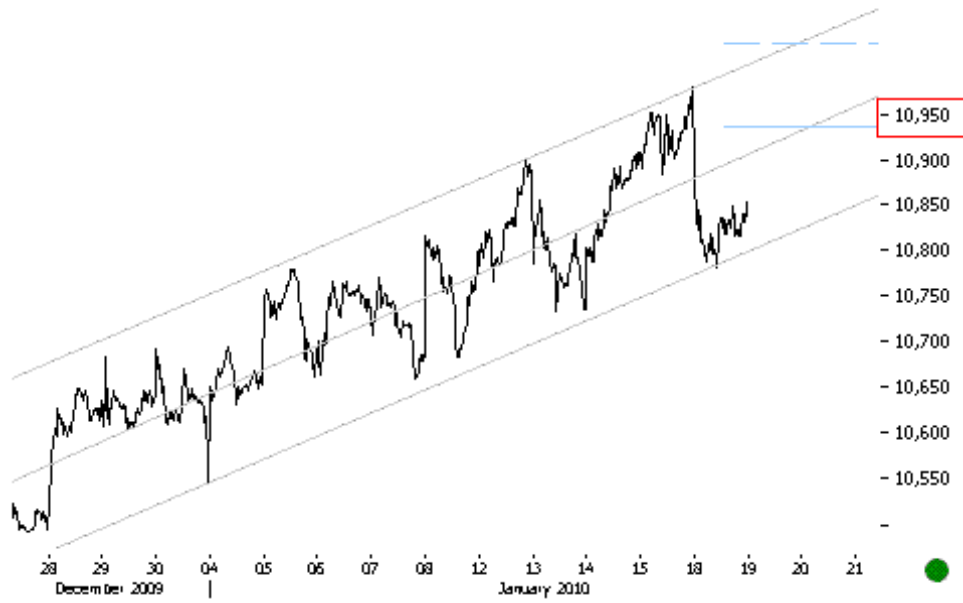
19.01.10 GBPUSD 60MIN
 As we anticipated, prices pushed higher till key resistances at 1.645 levels in the third wave up. Sub respective levels our corrective scenario is still valid.



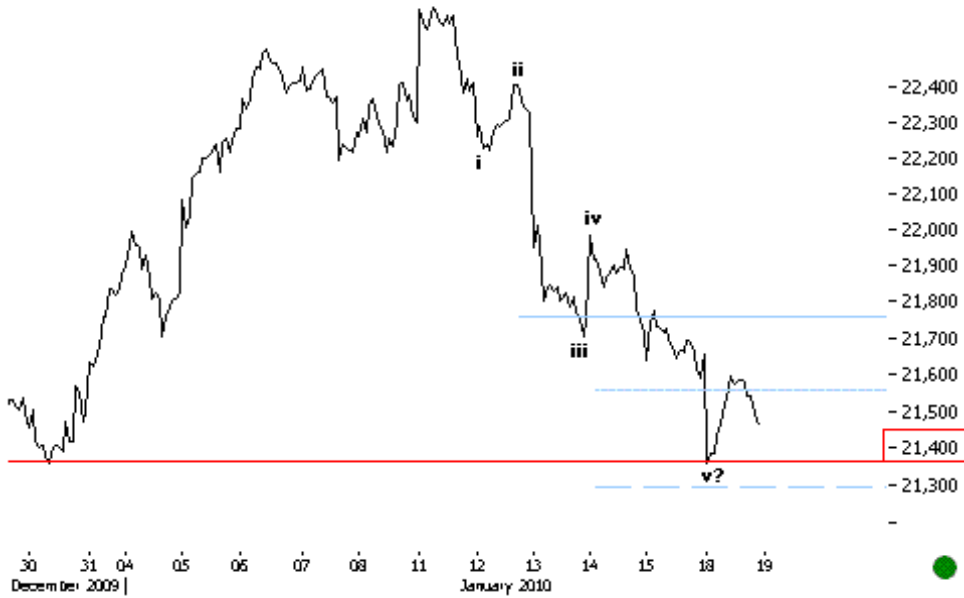
19.01.10 EURUSD 60MIN
 Prices break out of the corrective structure as anticipated. First targets lie at key 1.42 levels.



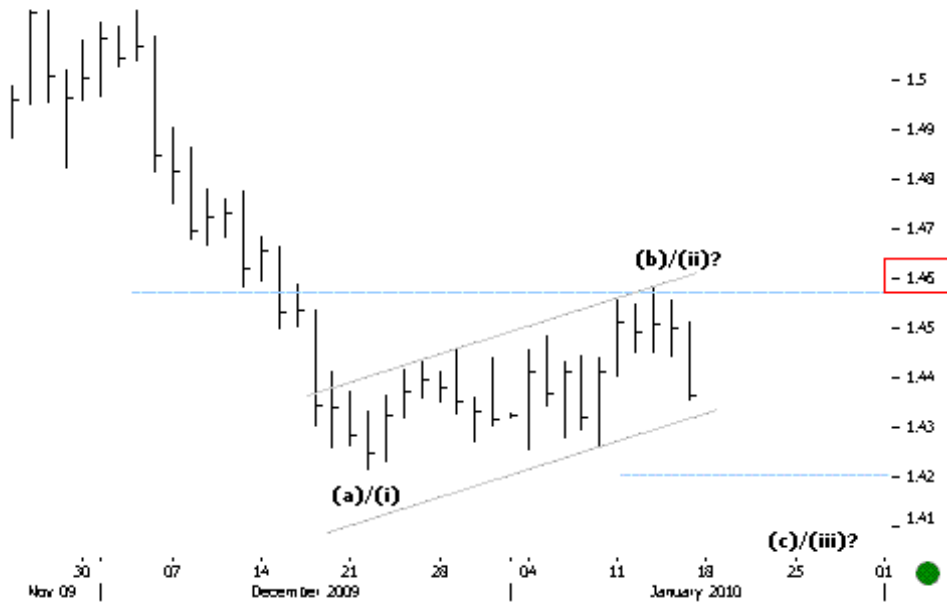
18.01.10 GOLD 60MIN
 Both preferred and alternate scenarios (preferred - correction down, alternate - new impulse down) continue to point lower till at least key supports at 1,120-1,110 levels.



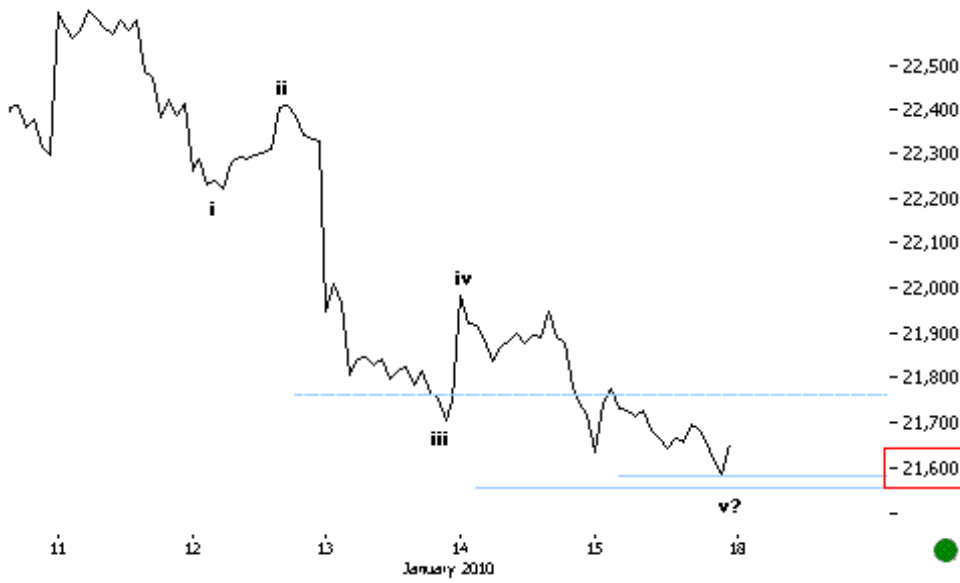
18.01.10 NIKKEI 5MIN
 Prices continue to hold the subminor trend channel up. Above key 10,950 levels we should get further positive confirmation.



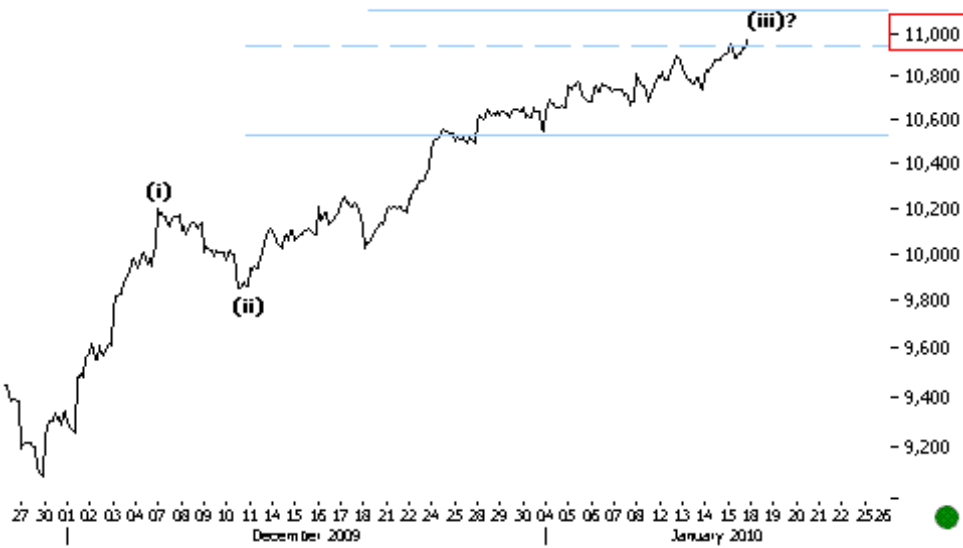
18.01.10 HANG SENG 5MIN Prices bounced back from previous lows near key 21,400 levels. The subminor impulse down seems complete.



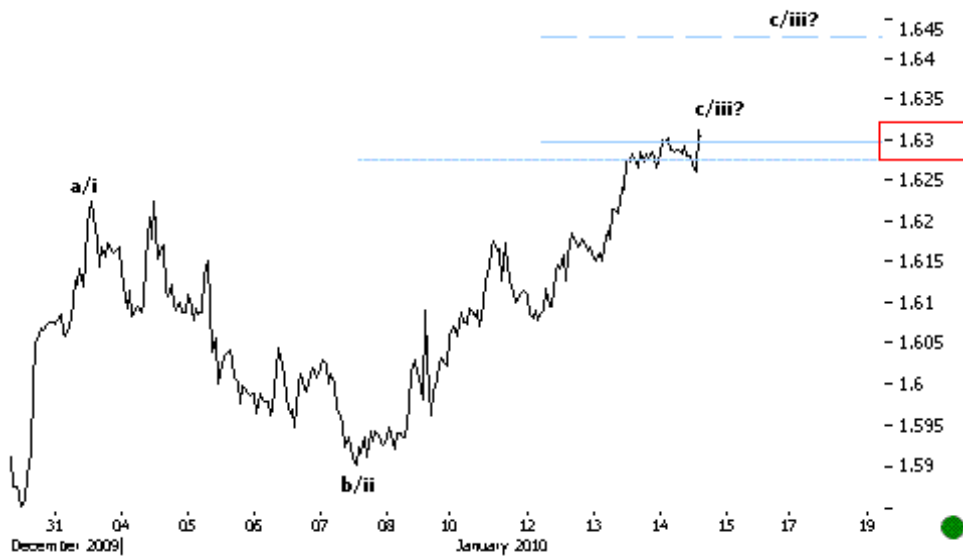
15.01.10 EURUSD DAILY Prices push down from anticipated resistances at 1.46.



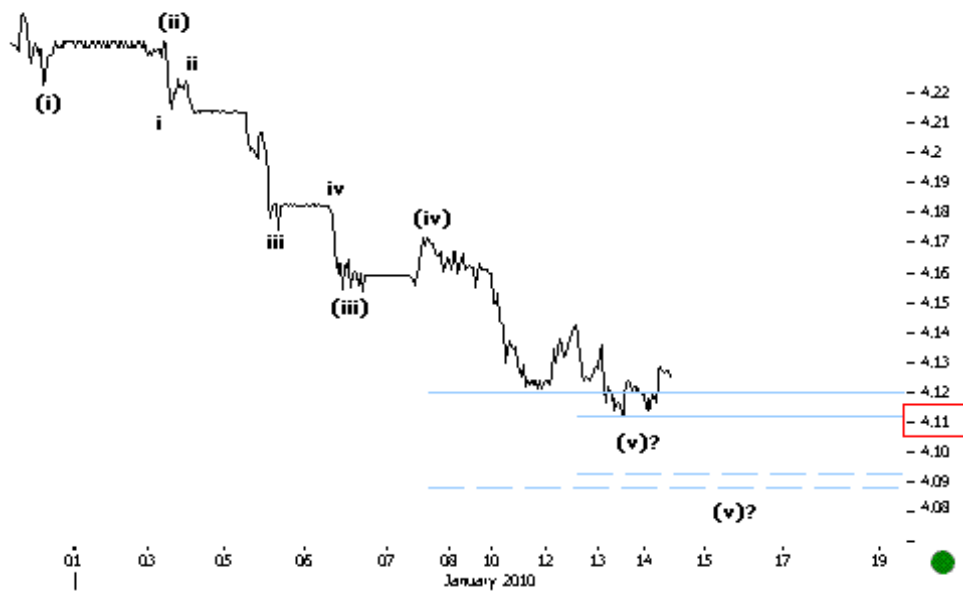
15.01.10 HANG SENG 5MIN Prices pushed lower till key supports at 21,600 levels. A larger bounce back from respective levels would suggest that the first impulsive leg down is already complete.



15.01.10 NIKKEI 30MIN Prices continue to push higher to psychological 11,000.

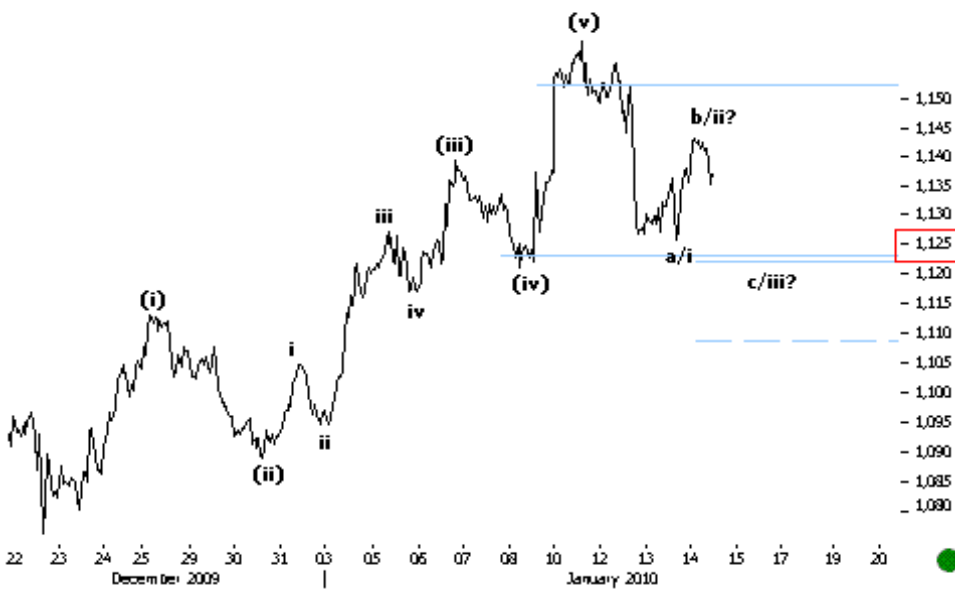
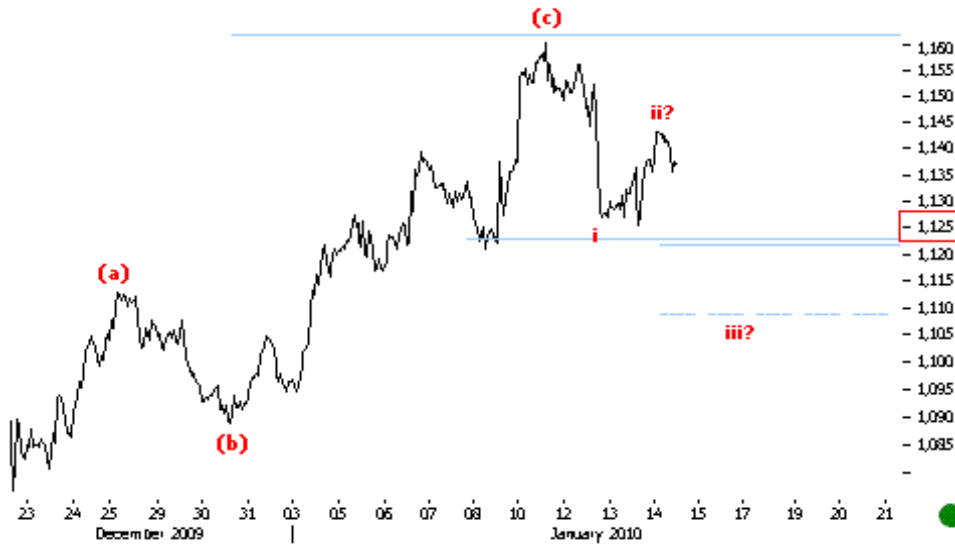


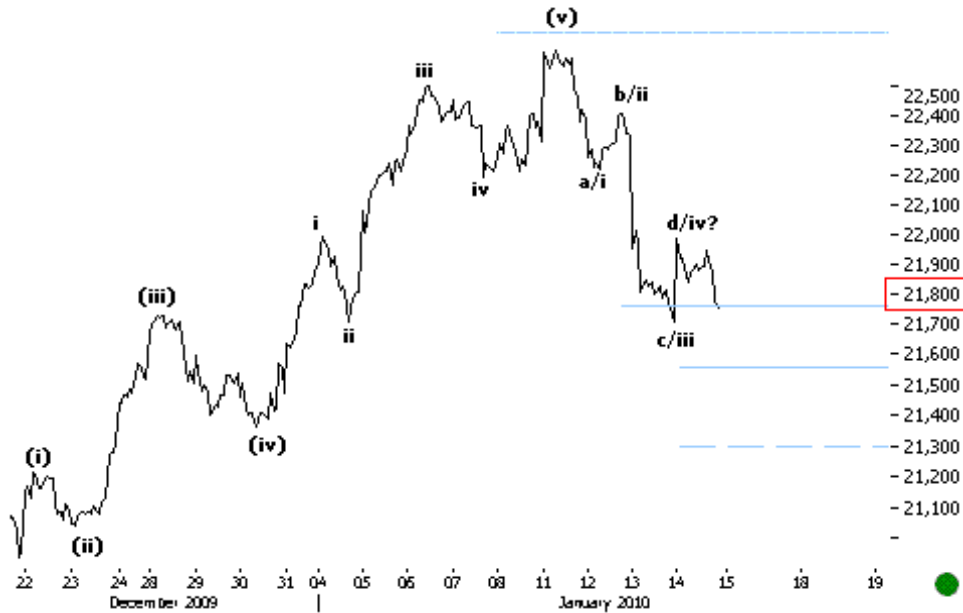
14.01.10 GBPUSD 60MIN
 Prices continued to push higher till anticipated resistances at 1.63. Above respective levels we could see an extension of the third wave up till key 1.64-1.645 levels.



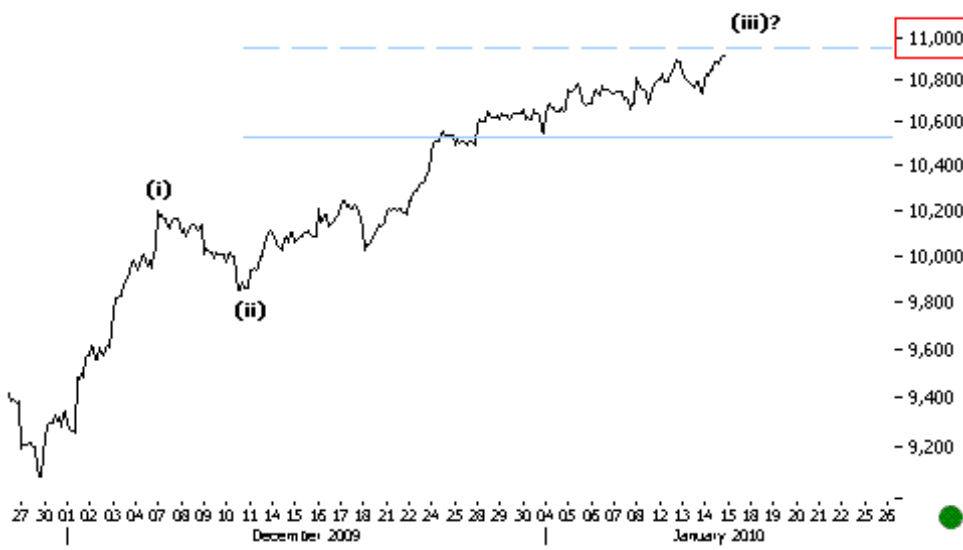
14.01.10 EURRON 30MIN
 Is is too early to call the subminor impulse down complete. Sub key 4.11 we could see an extension lower till key 4.09.

ALTERNATE

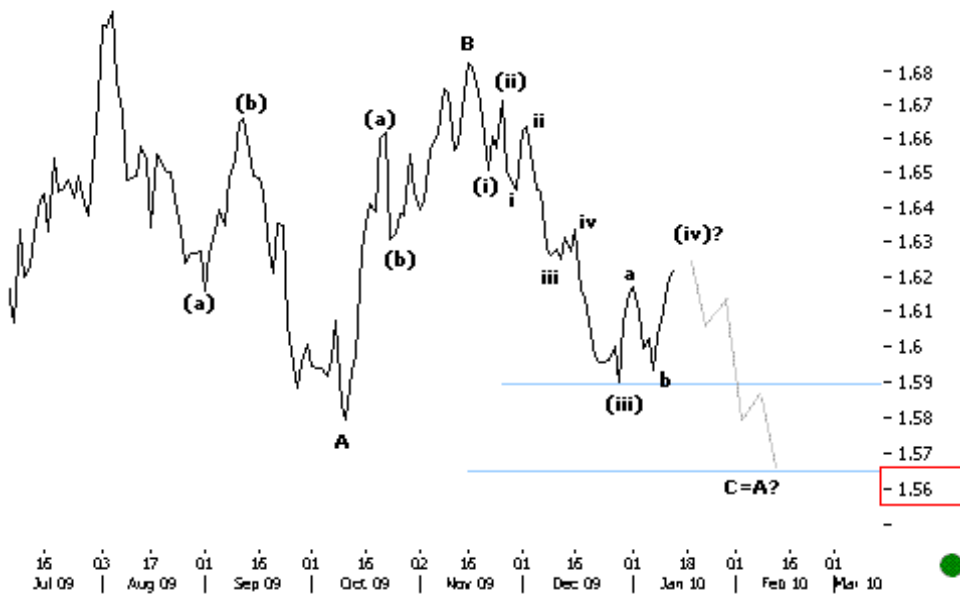




14.01.10 HANG SENG 10MIN A clear break sub key 21,800 levels would suggest that we are in a subminor impulse down which could push lower till next supports at 21,300 levels.



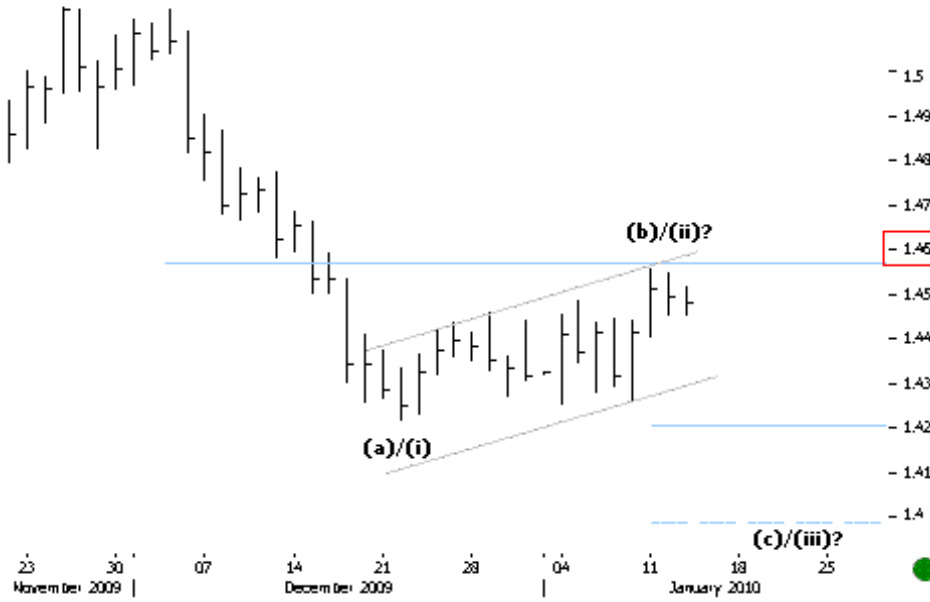
14.01.10 NIKKEI 30MIN Prices are heading to key resistances at psychological 11,000 levels in the third leg of the subminor impulse up. Above respective levels we should get more positive confirmation.



13.01.10 GBPUSD DAILY
 Our preferred scenario continues to look at this as a completing FLAT structure. The C wave down seems to have a pending fifth leg which should push lower till key 1.57-1.56 levels.



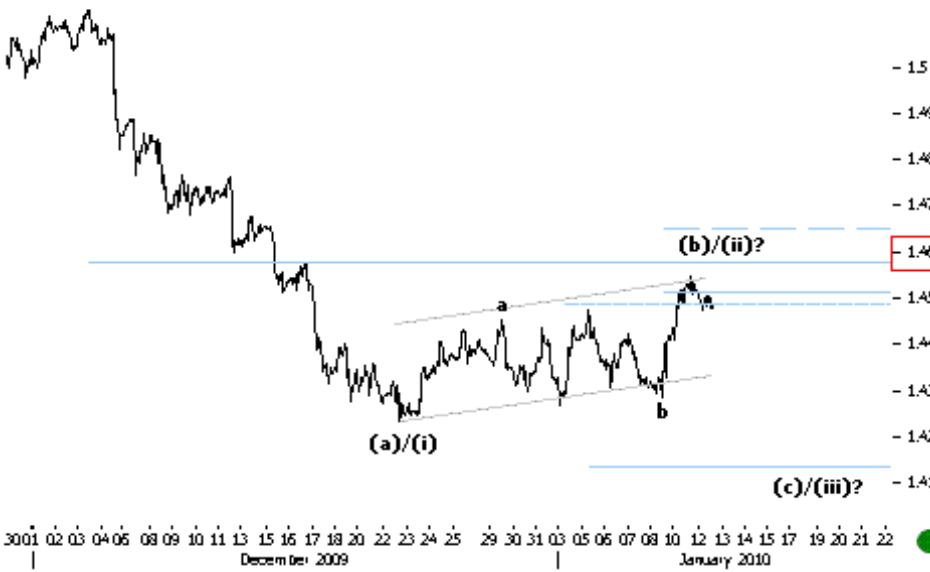
13.01.10 GBPUSD 60MIN
 Prices continue to push higher in the c/iii wave up. Key resistance levels lie at 1.63.



- 1.5
 - 1.49
 - 1.48
 - 1.47
 - 1.46
 - 1.45
 - 1.44
 - 1.43
 - 1.42
 - 1.41
 - 1.4

13.01.10 EURUSD DAILY

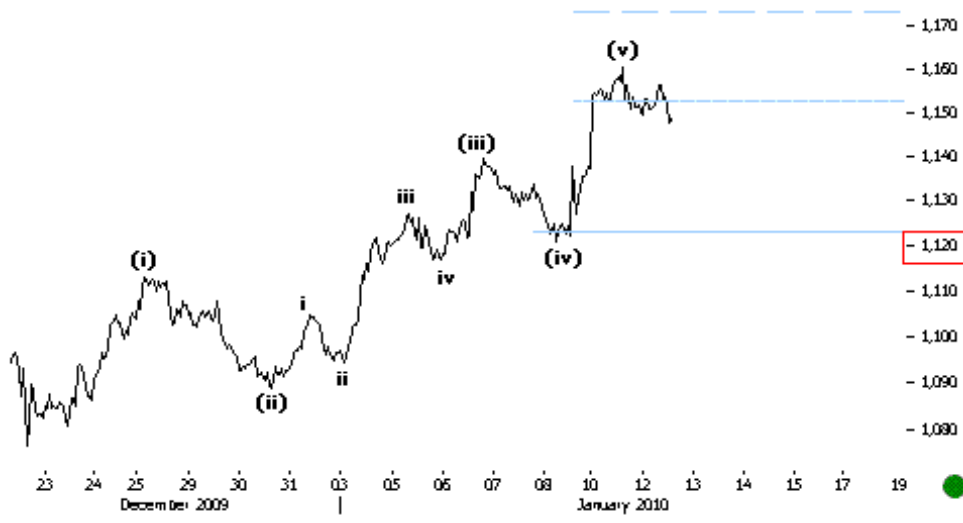
The current sideways action still looks like a countertrend corrective which should complete soon and push lower. Sub key 1.46 we continue to look lower till 1.4.



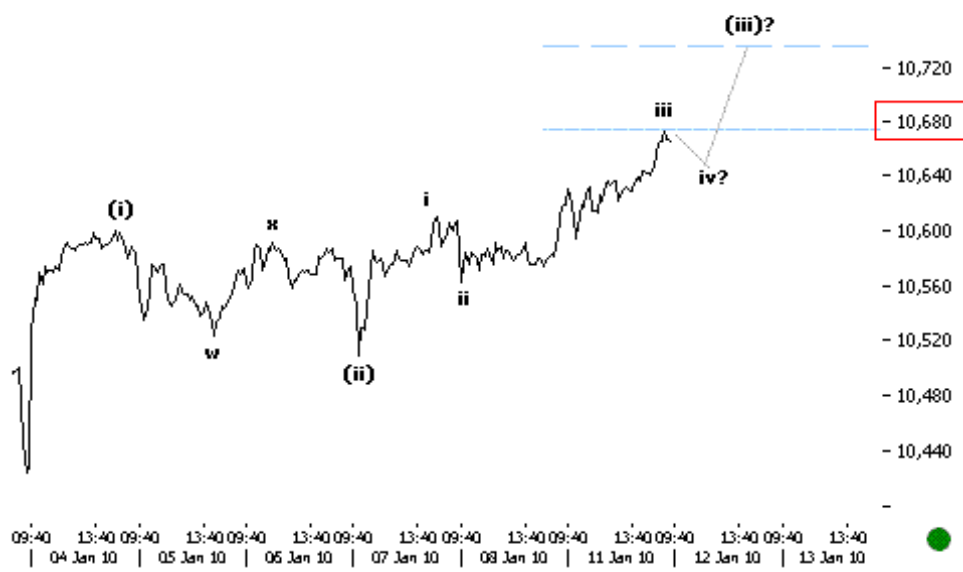
- 1.5
 - 1.49
 - 1.48
 - 1.47
 - 1.46
 - 1.45
 - 1.44
 - 1.43
 - 1.42
 - 1.41

12.01.10 EURUSD 60MIN

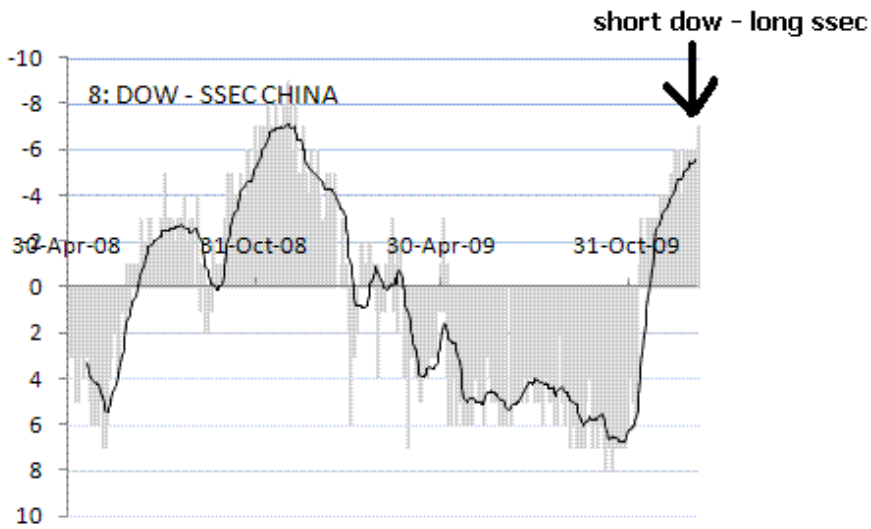
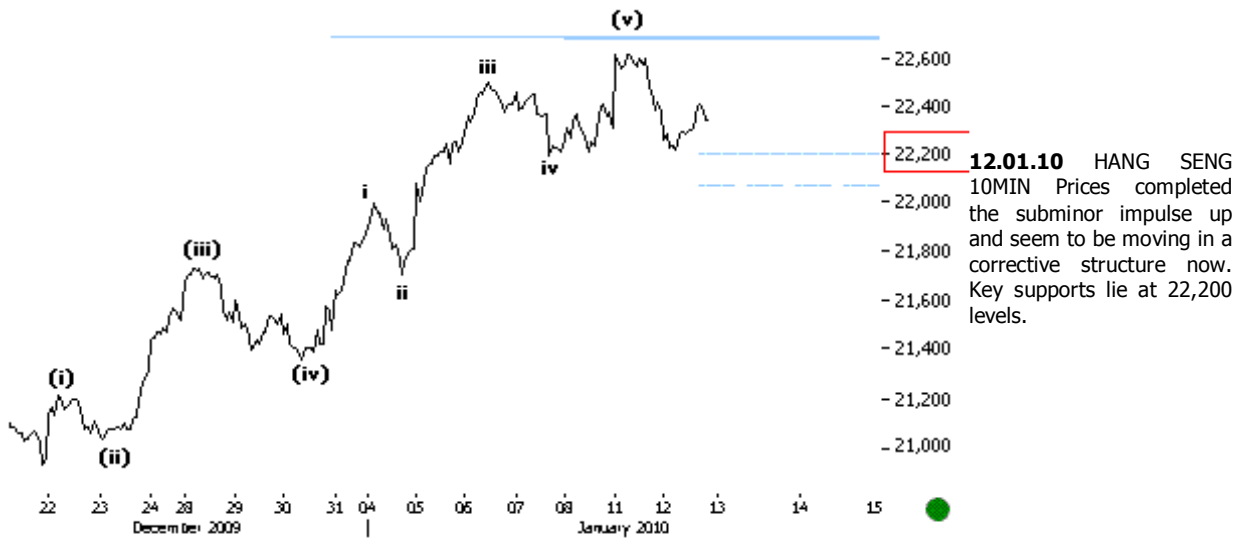
Prices continue to hold key resistances at 1.45-1.46 levels.



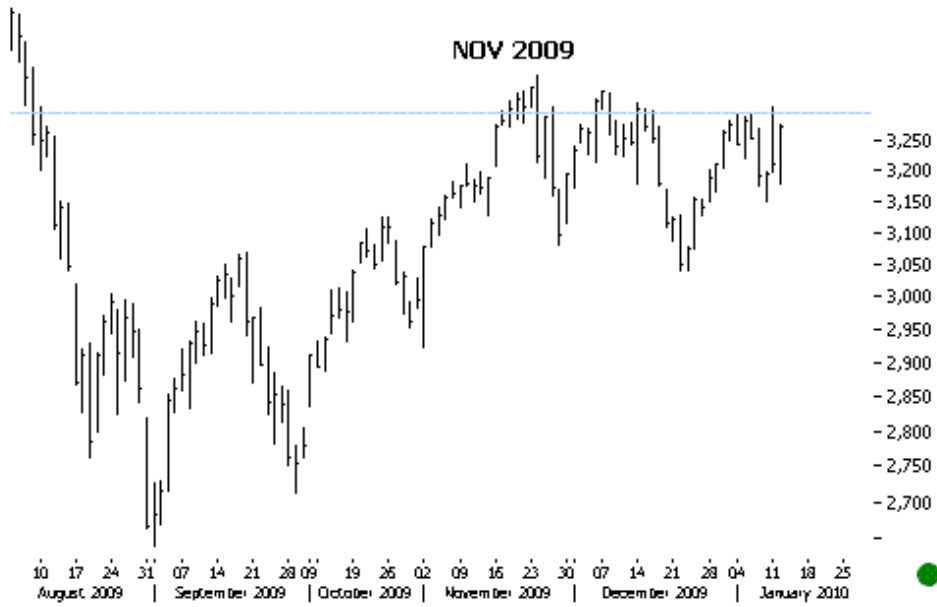
12.01.10 GOLD 60MIN
 The subminor impulse up seems complete. We could see a deeper retracement now till key supports at 1,120 levels.



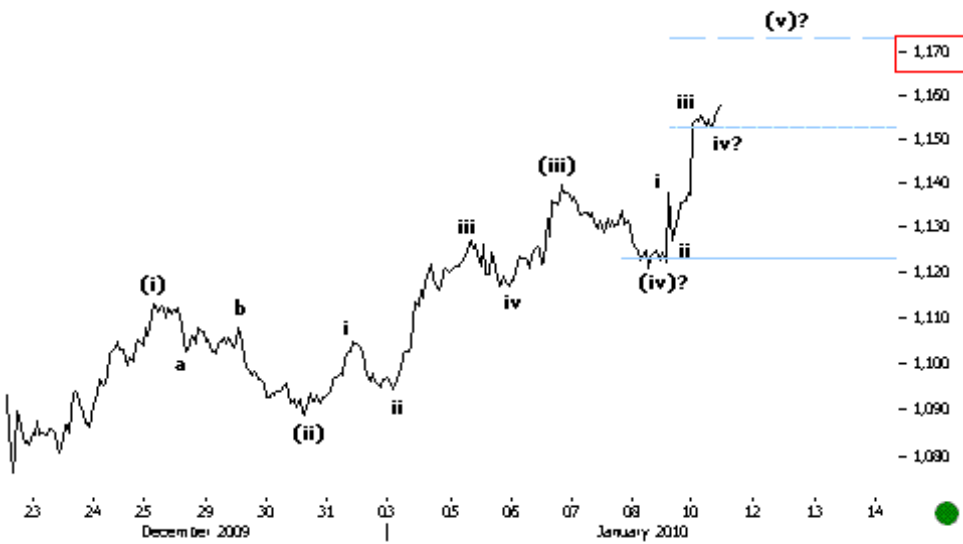
12.01.10 DOW 10MIN
 Our preferred view continues to look at an incomplete subminor impulse up. Key levels lie at 10,680.



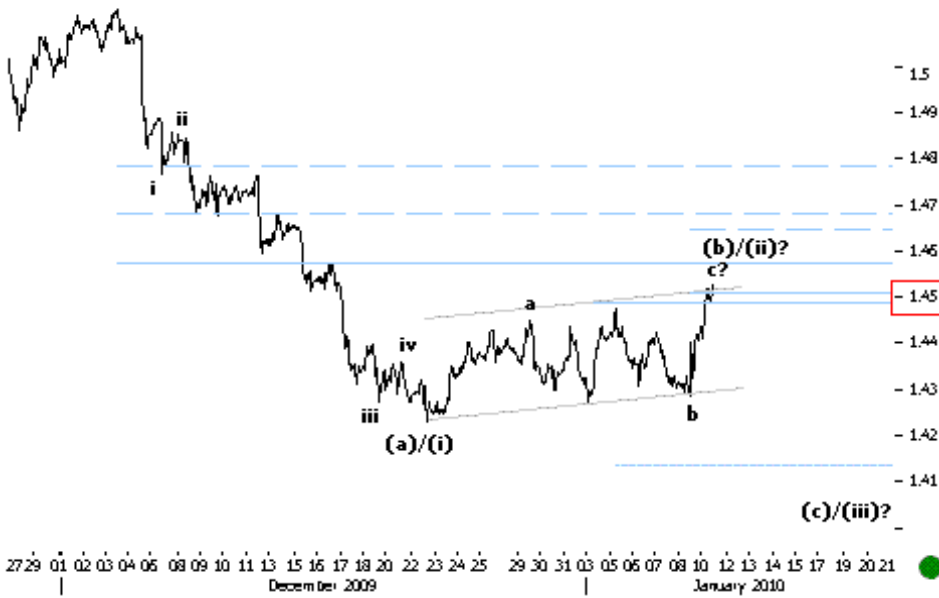
12.01.10 Dow vs. SSEC
 The DOW-SSEC (China) performance cycle is topping suggesting time to go Short DOW - Long SSEC. In other words SSEC china should outperform DOW 30.



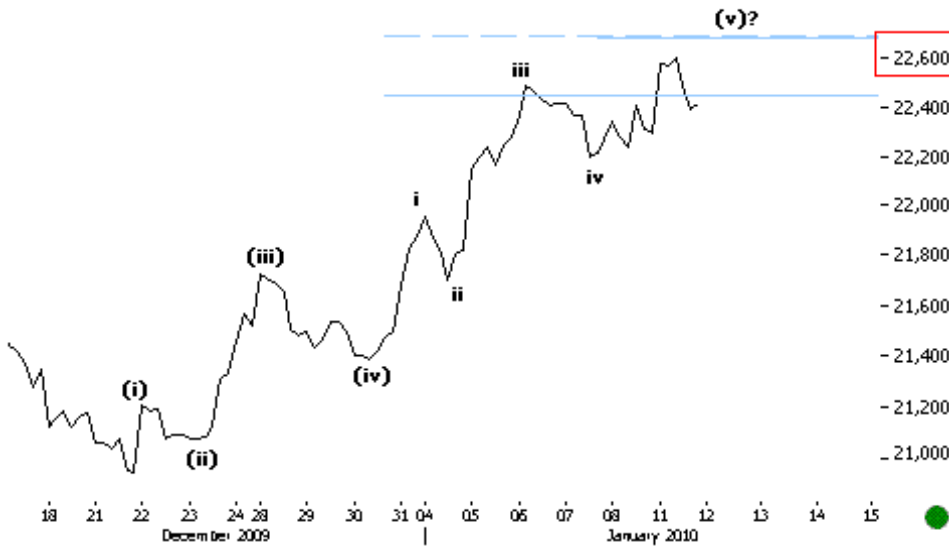
12.01.10 SSEC CHINA Still below Nov 2009 highs.



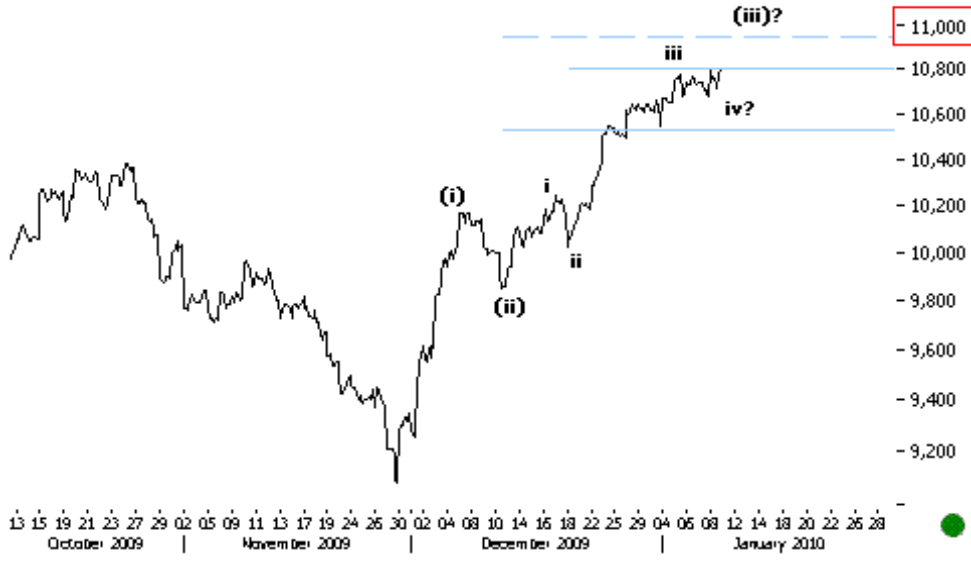
11.01.10 GOLD 60MIN Prices are in the last leg of the subminor impulse up. Key resistance levels lie at 1,170.



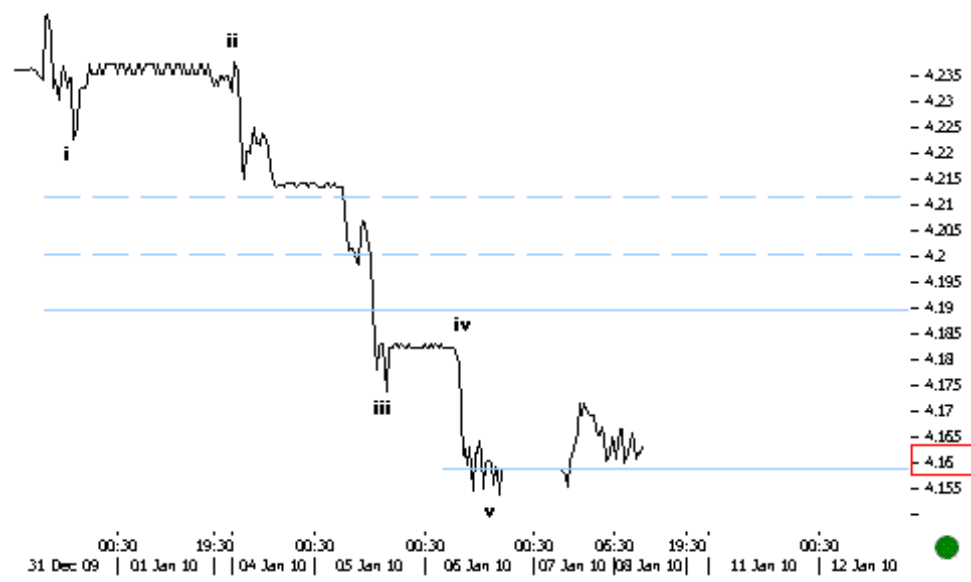
11.01.10 EURUSD 60MIN
 The current action still looks like a corrective second wave up. Key resistances lie at 1.45-1.46 levels.



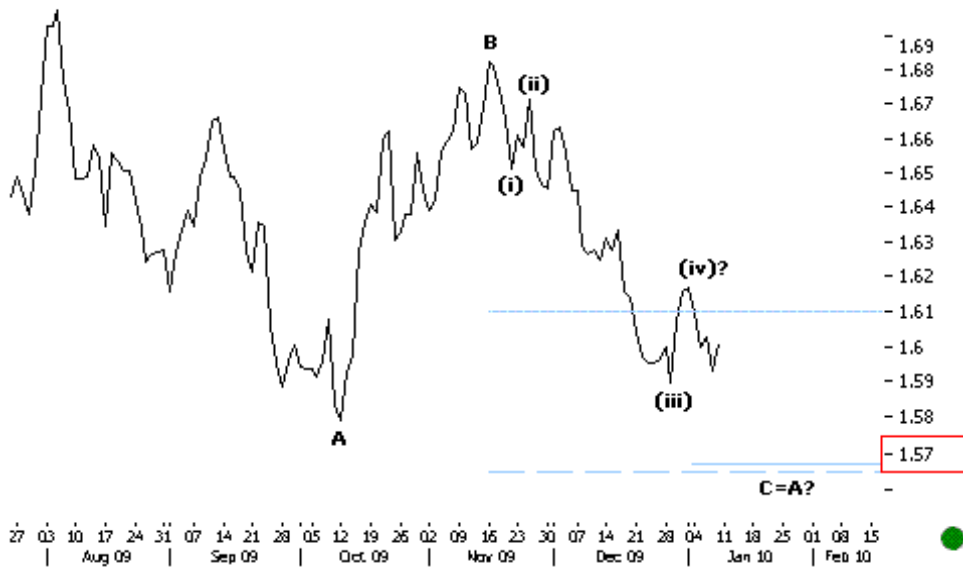
11.01.10 HANG SENG 60MIN
 Prices are completing the extended fifth leg up. Key resistance levels lie near 22,700.



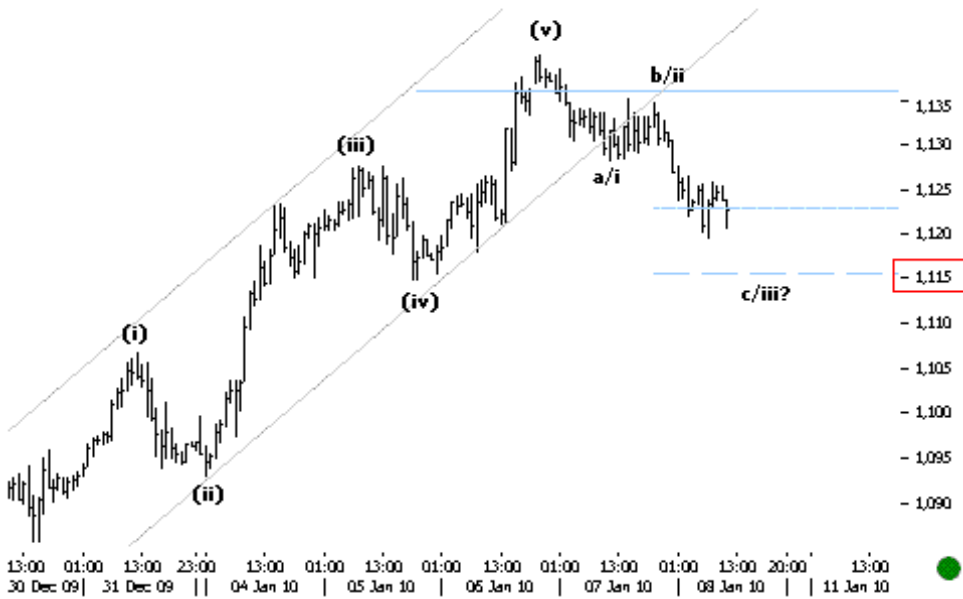
11.01.10 NIKKEI 60MIN
 Prices continue to push higher in the third leg of the subminor impulse up. Key resistances lie at psychological 11,000 levels.



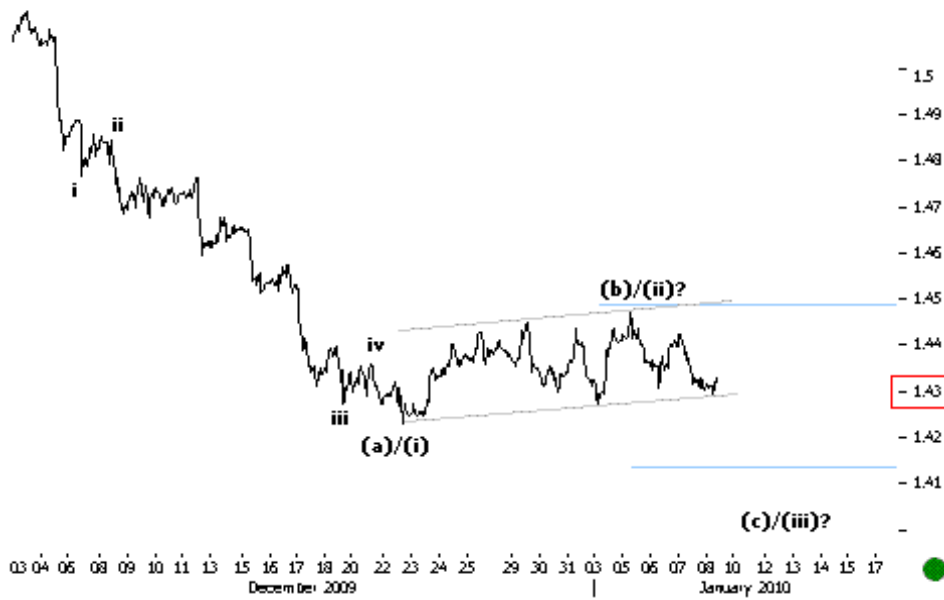
08.01.10 EURRON 30MIN
 Prices continue to hold key supports at 4.16 levels. We need a clear break here to continue to look lower.



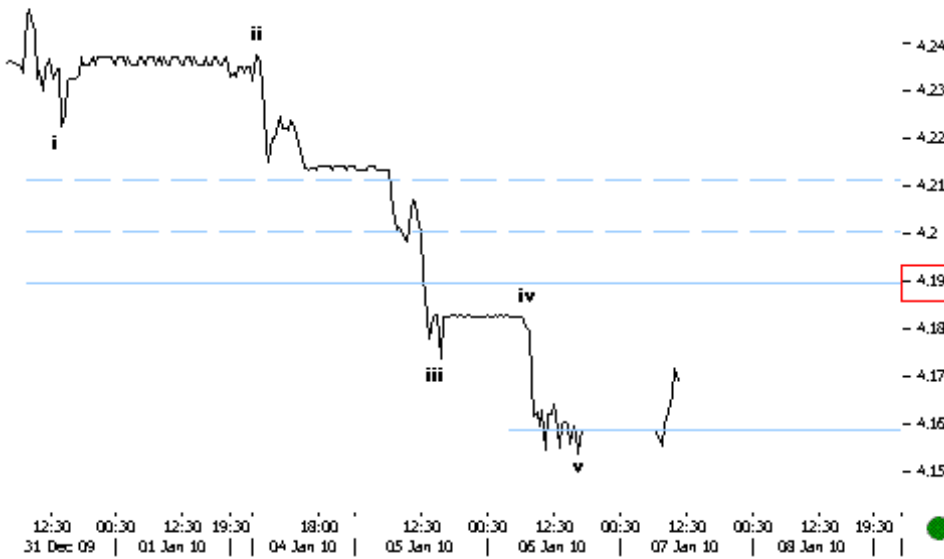
08.01.10 GBPUSD DAILY
 Prices are pushing lower to complete the larger C wave down. Key targets lie at 1.57.



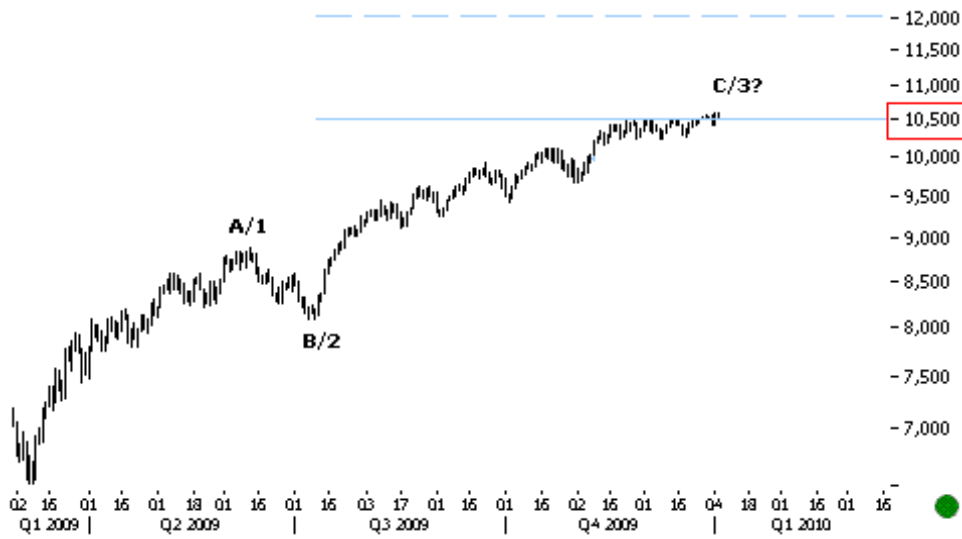
08.01.10 GOLD 60MIN As anticipated, prices completed the subminor impulse up near key resistances at 1,135 levels and now seem to be in a corrective structure down. Key supports lie at previous fourth and key FIB levels at 1,115.



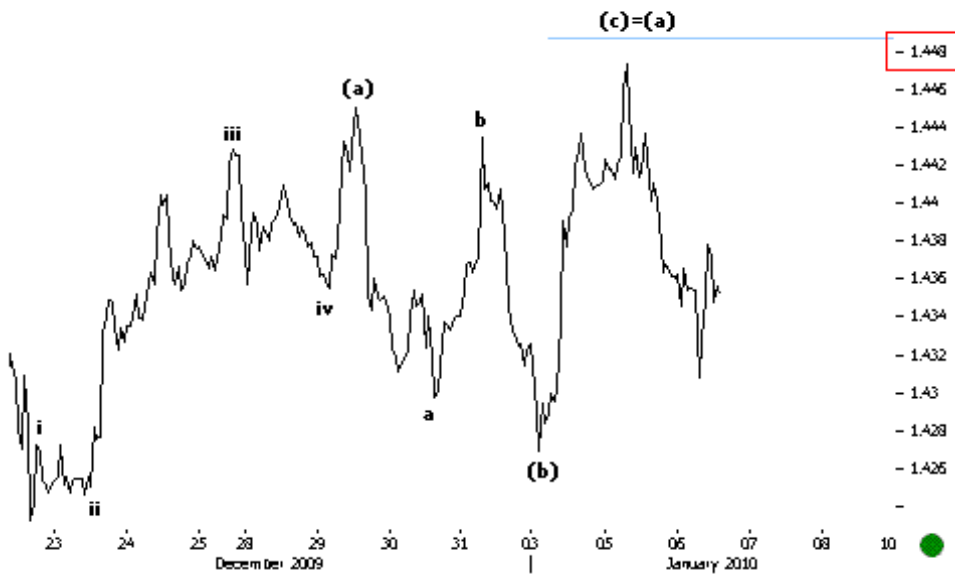
08.01.10 EURUSD 60MIN
 The current structure still looks like a countertrend corrective which should push prices lower till key 1.41-1.4. A clear break of the trend channel supports would be a negative confirmation.



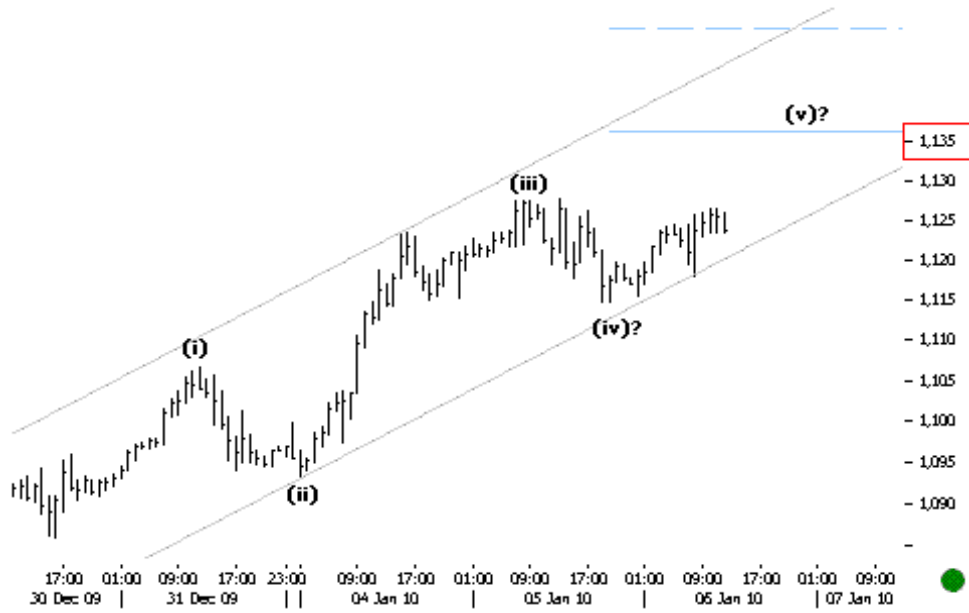
07.01.10 EURRON 30MIN
 Prices seem to have completed a subminor impulse down. The current bounceback could push higher till key resistances at 4.18-4.19 levels.



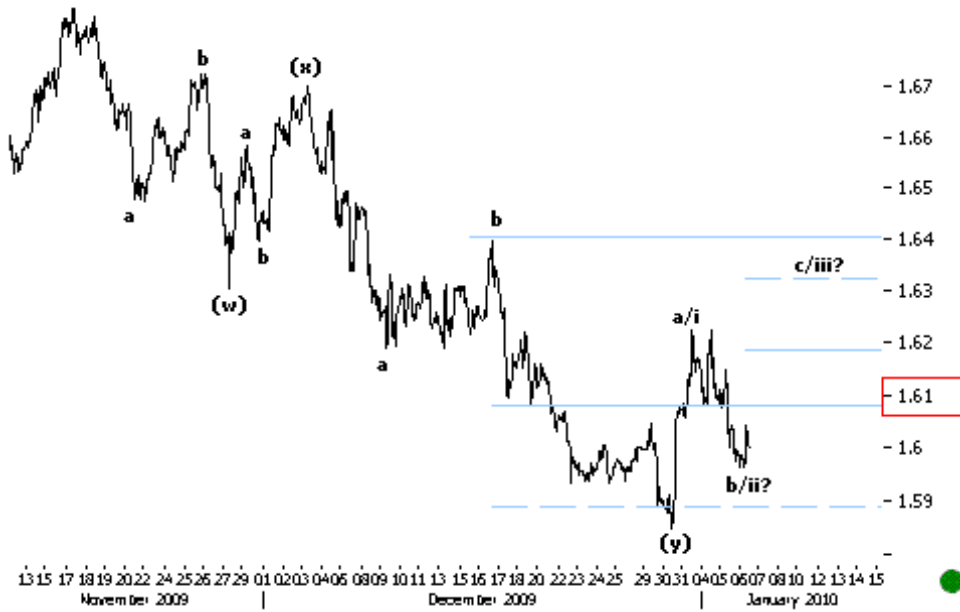
06.01.10 DOW DAILY Key 10,500-11,000 levels remain an important resistance for DOW.



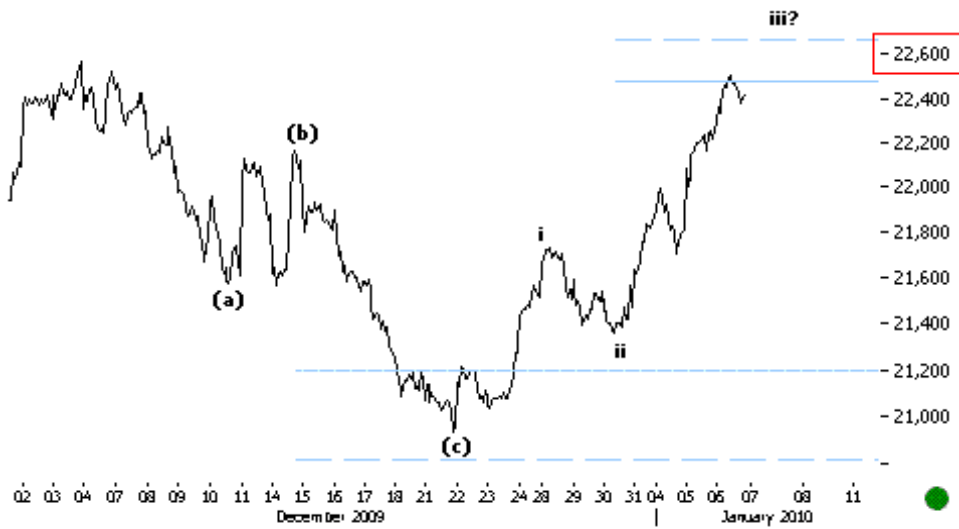
06.01.10 EURUSD 60MIN As anticipated, prices continue to push lower after completing the corrective structure up.



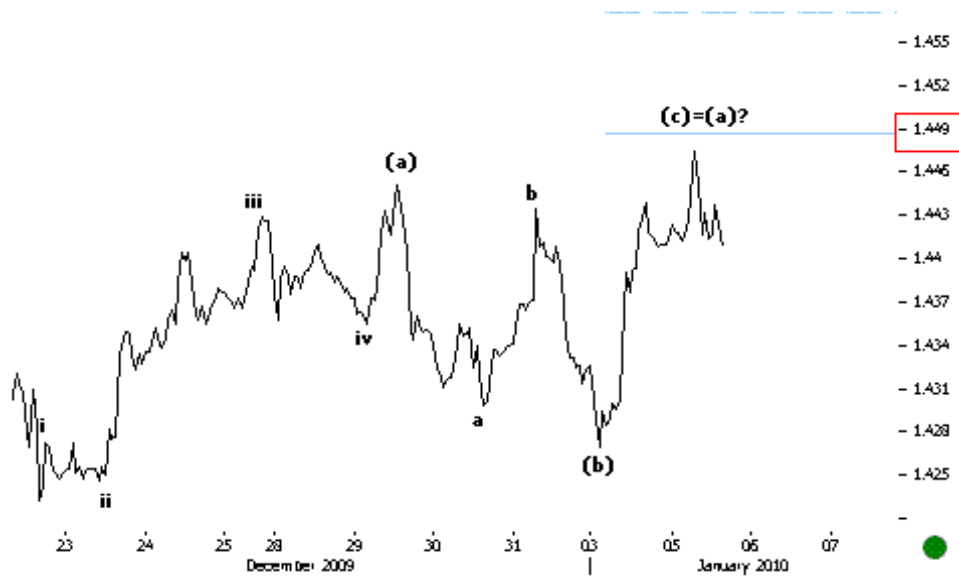
06.01.10 GOLD 60MIN
 The current structure seems to have a pending fifth leg up which should push higher till key resistance levels at 1,135 or even higher.



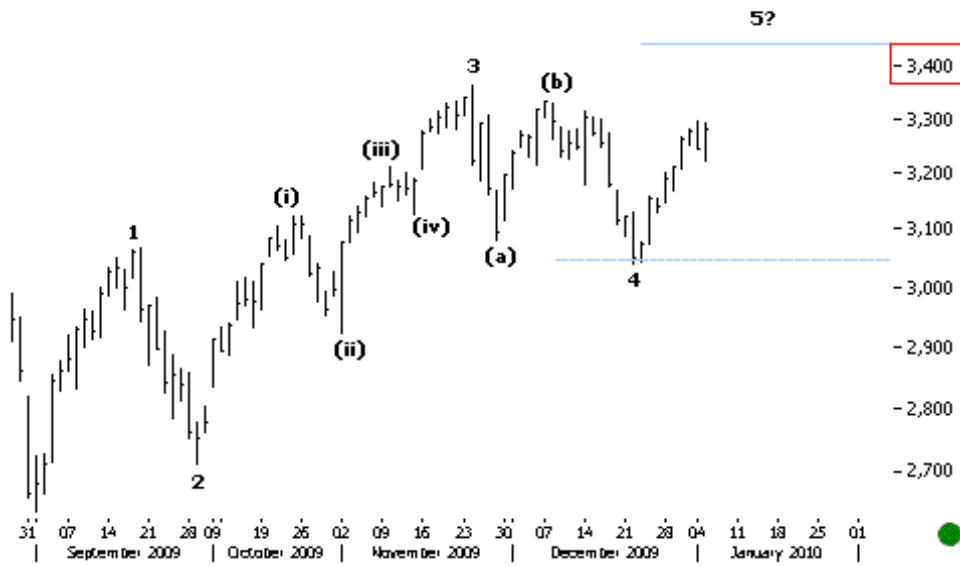
06.01.10 GBPUSD 60MIN
 Prices remain above key supports at 1.59. We now expect a third leg up till key resistances at 1.63-1.64 levels.



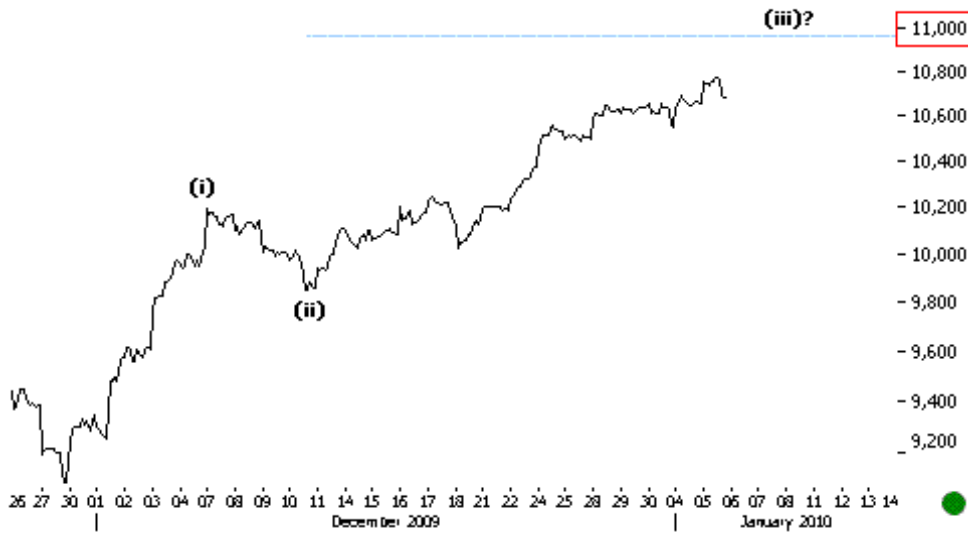
06.01.10 HANG SENG 10MIN The current upmove looks impulsive. Key levels lie at 22,600.



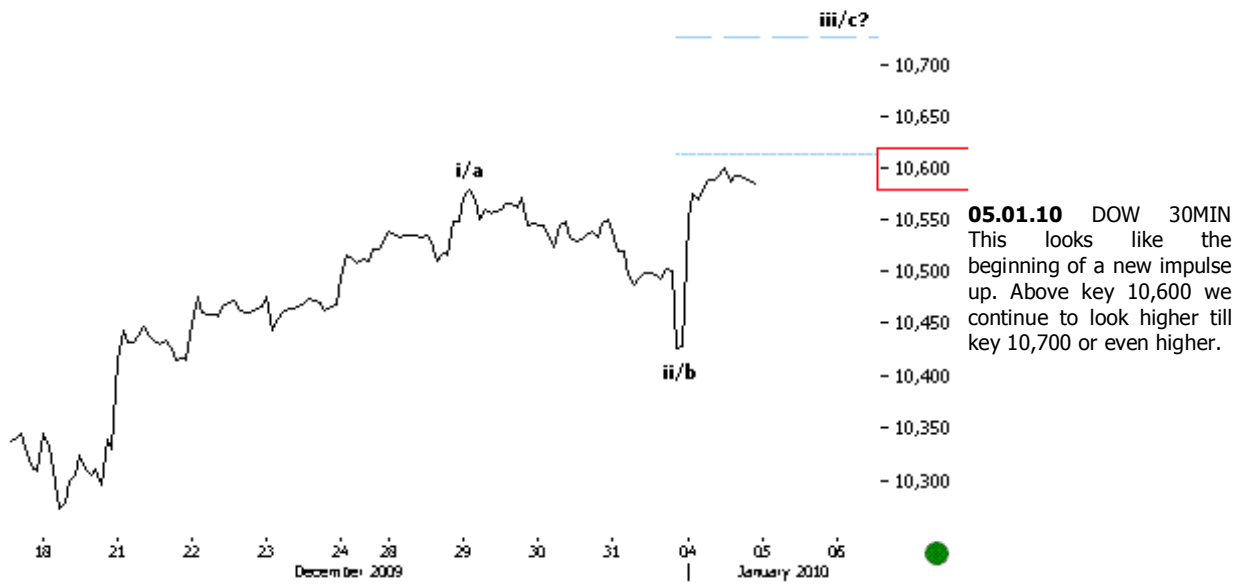
05.01.10 EURUSD 60MIN The current formation still looks like an a-b-c corrective up which could already be completed. Sub key 1.449 levels we continue to look lower.



05.01.10 SSEC DAILY The minor impulse seems to have a pending fifth leg up. Key levels lie at 3,400.



05.01.10 NIKKEI 30MIN The current structure looks impulsive. First resistances lie at psychological 11,000 levels.



05.01.10 DOW 30MIN
 This looks like the beginning of a new impulse up. Above key 10,600 we continue to look higher till key 10,700 or even higher.

Market Open. GMT 12:09 Good morning. Watch for key levels. Trade Safe.

Prepared by

Orpheus CAPITALS Intraday services Team

For subscription inquiries mail to: support@or-phe-us.com This document is not for public distribution and has been furnished to you solely for your information and may not be reproduced or redistributed to any other person. The manner of circulation and distribution of this document may be restricted by law. Persons into whose possession this document may come are required to inform themselves of, and to observe, such restrictions. This material is for the personal information of the authorized recipient, and we are not soliciting any action based upon it. This report is not to be construed as an offer to sell or the solicitation of an offer to buy any security in any jurisdiction where such an offer or solicitation would be illegal. No person associated with Orpheus CAPITALS is obligated to call or initiate contact with you for the purposes of elaborating or following up on the information contained in this document. The material is based upon information that we consider reliable, but we do not represent that it is accurate or complete, and it should not be relied upon as such. Neither Orpheus CAPITALS, nor any person connected with Orpheus CAPITALS, accepts any liability arising from the use of this document. The recipient of this material should rely on their own investigations and take their own professional advice. Opinions expressed are our current opinions as of the date appearing on this material only. While Orpheus CAPITALS endeavor is to update on a reasonable basis the information discussed in this material, there may be regulatory, compliance, or other reasons that prevent him from doing so. Prospective investors and others are cautioned that any forward-looking statements are not predictions and may be subject to change without notice. No part of this material may be duplicated in any form and/or redistributed without prior written consent. In so far as this report includes current or historical information, it is believed to be reliable, although its accuracy and completeness cannot be guaranteed.

2010

TICKS.GLOBAL